

# FLASH GALA™

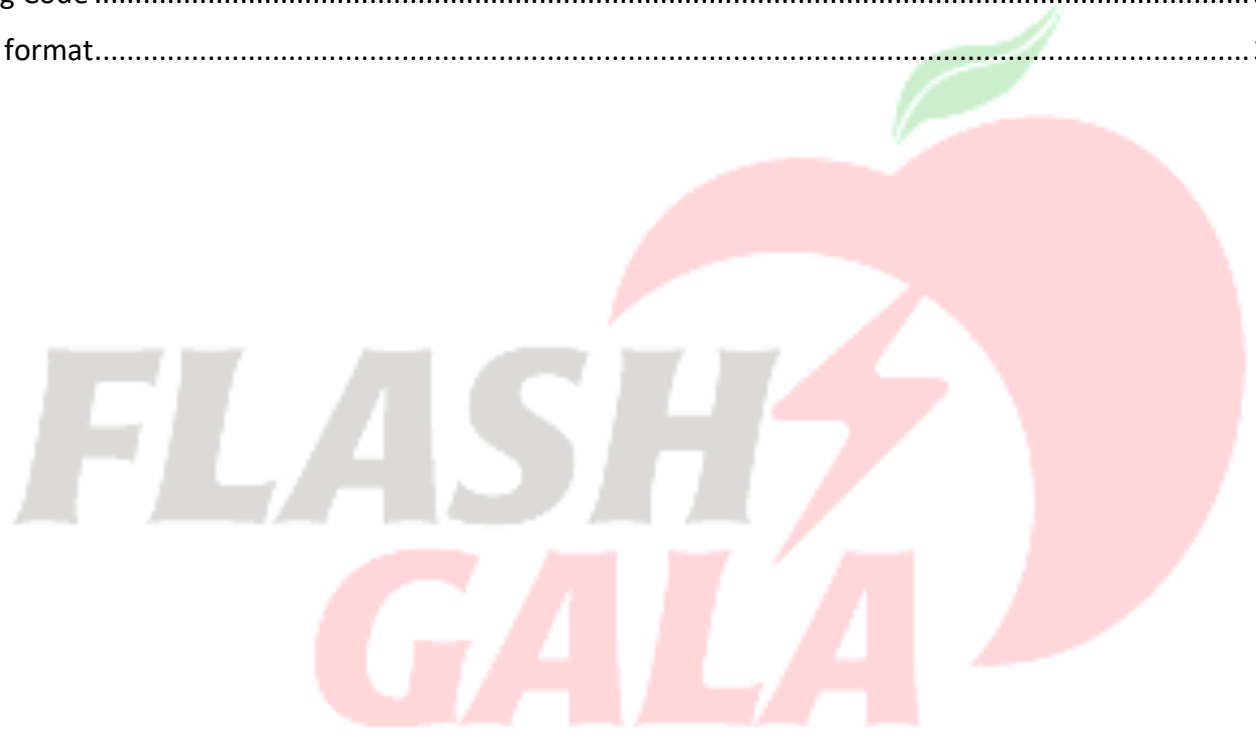
## Brand Manual 2026



## Contents

|   |          |
|---|----------|
| FLASH GALA™ MINIMUM <b>INTERNATIONAL</b> QUALITY SPECIFICATIONS AT DESTINATION .....  | 3        |
| <b>Note: Any fruit of the BigBucks Gala variety that meets the specifications for FLASH GALA must be packed as FLASH GALA, as per Grower Agreement.....</b> | <b>3</b> |
| FLASH GALA™ MINIMUM <b>LOCAL</b> QUALITY SPECIFICATIONS AT DESTINATION.....   | 4        |
| <b>Note: Any fruit of the BigBucks Gala variety that meets the specifications for FLASH GALA must be packed as FLASH GALA, as per Grower Agreement.....</b> | <b>4</b> |
| Colour Chart .....  | 5        |
| PHOTOS OF SELECTED CHARACTERISTICS AND DEFECTS .....  | 6        |
| 1. Colour .....   | 6        |
| 2. Decay .....  | 7        |
| 3. Internal Browning.....   | 8        |
| 4. Apple Scab .....   | 9        |
| 5. Bruising.....  | 10       |
| 6. Cracks .....   | 11       |
| 7. Hail Marks.....  | 12       |
| 8. Insect Damage .....  | 13       |
| 9. Sunburn .....  | 13       |
| 10. Blemishes .....   | 14       |
| 11. Lenticel Damage.....  | 15       |
| 12. Malformation .....  | 16       |
| 13. Stem End Russet.....  | 17       |
| 14. Retiform Russet.....  | 18       |
| 15. Red Russet .....  | 19       |
| 16. Solid Russet .....  | 20       |
| 17. Injuries.....   | 21       |
| 18. Heat Damage.....  | 21       |
| 19. Starch Chart.....   | 22       |
| Packing Manual .....  | 23       |
| Carton Layout .....   | 24       |
| Trademark .....   | 28       |
| Bag Layout.....   | 29       |
| Fruit Label Layout.....   | 33       |

|                       |    |
|-----------------------|----|
| Trays .....           | 33 |
| Bubble Pad .....      | 34 |
| Outer Liner Bag ..... | 34 |
| Corner Boards.....    | 34 |
| Packing Format.....   | 35 |
| Presentation .....    | 35 |
| Direction.....        | 35 |
| Box End Label .....   | 36 |
| GlobalGap Number..... | 37 |
| Date Code.....        | 37 |
| Picking Code .....    | 37 |
| Pallet format.....    | 38 |



## FLASH GALA™ MINIMUM INTERNATIONAL QUALITY SPECIFICATIONS AT DESTINATION

| <b>CHARACTERISTICS</b>  |   |
|---|---|
| Approved Variety: BigBucks Gala   |   |
| Brix: Average of 12% or greater   |   |
| Colour: Cream-pale green background, covered by greater than 80% surface colour in a continuous block, where surface colour is not interrupted by an area of more than 5 cm <sup>2</sup> . Allow tolerance of 10% for fruit with colour interruption greater than 5 cm <sup>2</sup> . Allow tolerance of 5% for fruit with less than required total surface colour. See Flash Gala™ Colour Chart R5 and better. |   |
| Firmness (Pressure): Minimum average 6.5 kg\cm <sup>2</sup> with not more than 25% below 6kg. Measured with an 11 mm penetrometer   |   |
| <b>DESCRIPTION OF THE DEFECT AND CLASSIFICATION</b>   |   |
| MAJOR DEFECTS   | <p><b><u>May not exceed 1% of sample size as described</u></b></p> <ul style="list-style-type: none"> <li>- Core Rot</li> <li>- Decay includes Grey mould, Blue mould, Bull’s Eye rot or any other decay</li> <li>- Internal Browning</li> <li>- Scald</li> <li>- Bitter Pit</li> <li>- Heat Damage</li> </ul> <p><b><u>May not exceed 3% of sample size as described</u></b></p> <ul style="list-style-type: none"> <li>- Lenticel Damage: When more than two spots greater than 1 mm diameter on a single fruit</li> <li>- Apple Scab. When more than three spots of 2 mm diameter on a single fruit</li> <li>- Bruising — major: When flesh is discoloured</li> <li>- Cracks — major: Open cracks showing the flesh of the apple</li> <li>- Hail Marks — major: When skin is injured, or flesh is discoloured</li> <li>- Insect Damage — major: Fresh unhealed damage or when skin penetration results in flesh discoloration or with evidence of excrement</li> <li>- Skin Penetrations such as stalk or mechanical injuries: Major any skin penetration, healed or otherwise.</li> <li>- Sunburn — major: When flesh is discoloured</li> </ul> |
| <b>TOTAL MAJOR MAY NOT EXCEED 3% OF SAMPLE SIZE</b>   |   |
| MINOR DEFECTS   | <ul style="list-style-type: none"> <li>• Blemishes such as scars, scratches, rub marks and frost injury: When a single mark is more than 20 mm long and a total area greater than 1 cm<sup>2</sup> on a single fruit</li> <li>• Bruising — minor: When total bruised area per apple is greater than 1 cm<sup>2</sup></li> <li>• Chemical Burn: When surface colour is affected</li> <li>• Stem end cracks — minor: Light healed cracks around greater than half of stem end basin</li> <li>• Dirty fruit: Fruit must be clean but dust allowed in lower halves of stem and calyx ends</li> <li>• Hail Marks — minor: any visible hail mark.</li> <li>• Insect Damage— minor: When superficial mark (no skin penetration) with an area greater than 3 mm</li> <li>• Malformations: When malformations more than 10 mm on a single fruit</li> <li>• Net like russet: When rough to touch and surface colour is affected</li> <li>• Stem End Russet: When extended outside the stem end and calyx basin</li> <li>• Sunburn — minor: When surface colour is affected</li> </ul>   |
| <b>TOTAL MAJOR 1% &amp; 3% + MINOR DEFECTS MAY NOT EXCEED 10% OF SAMPLE SIZE (EG. 3% MAJOR + 7% MINOR)</b>  |   |

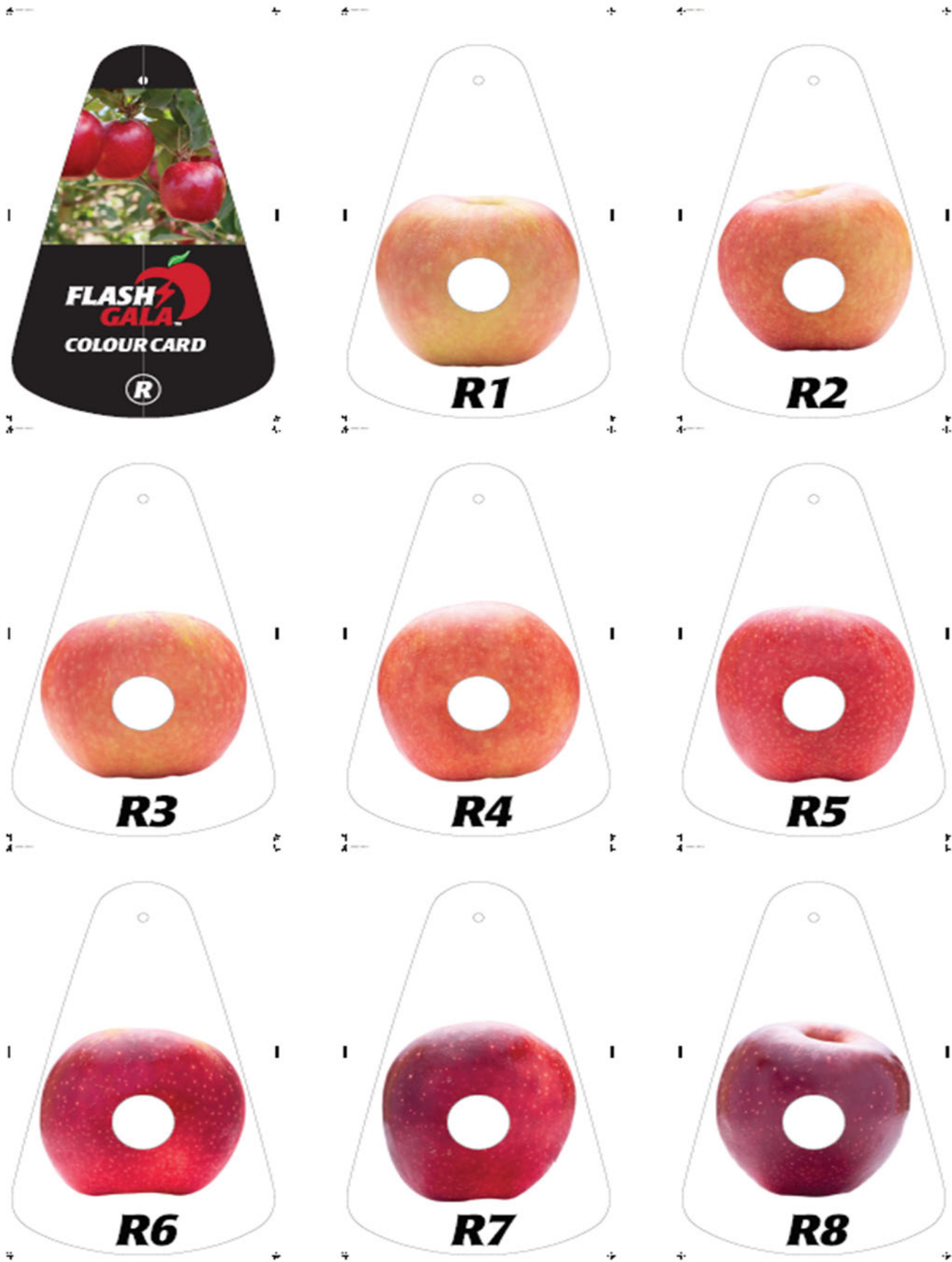
**Note: Any fruit of the BigBucks Gala variety that meets the specifications for FLASH GALA must be packed as FLASH GALA, as per Grower Agreement**

## FLASH GALA™ MINIMUM LOCAL QUALITY SPECIFICATIONS AT DESTINATION

| <b>CHARACTERISTICS</b>  |  |
|---|--|
| Approved Varieties: BigBucks Gala   |  |
| Brix: Average of 11% or greater   |  |
| Colour: Cream-pale green background, covered by greater than 80% surface colour in a continuous block, where surface colour is not interrupted by an area of more than 5 cm <sup>2</sup> . Allow tolerance of 10% for fruit with colour interruption greater than 5 cm <sup>2</sup> . Allow tolerance of 10% for fruit. With less than required total surface colour. See Flash Gala™ Colour Chart better than R5 and better. |  |
| Firmness (Pressure): Minimum average 6.3 kg/cm <sup>2</sup> with a 1/10 tolerance allowed to be below average pressure. Measured with an 11 mm penetrometer   |  |
| <b>DESCRIPTION OF THE DEFECT AND CLASSIFICATION</b>   |  |
| <b>MAJOR DEFECTS</b>  | <p><b><u>May not exceed 2% of sample size as described</u></b></p> <ul style="list-style-type: none"> <li>Core Rot</li> <li>Decay includes Grey mould, Blue mould Bulls Eye rot or any other decay</li> <li>Internal Browning</li> <li>Scald</li> <li>Bitter Pit</li> <li>Heat Damage</li> </ul> <p><b><u>May not exceed 6% of sample size as described</u></b></p> <ul style="list-style-type: none"> <li>Apple Scab. When more than three spots of 2 mm diameter on a single fruit</li> <li>Lenticel Damage: When more than two spots greater than 1 mm diameter on a single fruit</li> <li>Bruising — major: When flesh is discoloured</li> <li>Cracks — major: Open cracks showing the flesh of the apple</li> <li>Hail Marks — major: When skin is injured, or flesh is discoloured</li> <li>Insect Damage — major: Fresh unhealed damage or when skin penetration results in flesh discolouration or with evidence of excrement.</li> <li>Skin Penetrations such as stalk or mechanical injuries: When two marks greater than 3 mm diameter on a single fruit.</li> <li>Sunburn — major: When flesh is discoloured, No secondary burn allowed</li> </ul> <p style="text-align: center;"><b>TOTAL MINOR MAY NOT EXCEED 12% OF SAMPLE SIZE</b></p> |
| <b>MINOR DEFECTS</b>  | <ul style="list-style-type: none"> <li>Blemishes such as scars, scratches, rub marks and frost injury: When a single mark is more than 15 mm long and a total area greater than 1 cm<sup>2</sup> on a single fruit</li> <li>Bruising — minor: When total bruised area per apple is greater than 15mm</li> <li>Chemical Burn: When surface colour is affected</li> <li>Stem end cracks — minor: Light healed cracks of 1mm wide to 5mm long (if dry) allowed</li> <li>Dirty fruit: Fruit must be clean but dust allowed in lower halves of stem and calyx ends</li> <li>Hail Marks — minor: When more than three light marks less than 3 mm diameter on a single fruit and no more than 1 mm depth.</li> <li>Insect Damage— minor: When superficial mark (no skin penetration) with an area greater than 3 mm</li> <li>Malformations: When malformations more than 20 mm on a single fruit</li> <li>Net like russet: A37 no4</li> <li>Stem End Russet: A31 no 10</li> <li>Sunburn — minor: Yellow allowed – PLD Colour no 4 – No second burn</li> </ul> <p style="text-align: center;"><b>TOTAL MAJOR 2% &amp; 6% + MINOR DEFECTS MAY NOT EXCEED COMBINED DEFECTS 12% OF SAMPLE SIZE</b></p>  |

**Note: Any fruit of the BigBucks Gala variety that meets the specifications for FLASH GALA must be packed as FLASH GALA, as per Grower Agreement**

# Colour Chart



# PHOTOS OF SELECTED CHARACTERISTICS AND DEFECTS

## 1. Colour

Colour: Cream-pale green background, covered by greater than 80% surface colour in a continuous block, where surface colour is not interrupted by an area of more than 5 cm<sup>2</sup>. Where possible prints R7 & R8 should be packed separately.

**Tolerance for 10% of fruit with colour interruption greater than 5 cm<sup>2</sup>.**

**Tolerance for 6% of fruit with less than the required total surface colour.**

Best side: Fully coloured; Poor side: Chart A36 no 7.



GALA

## 2. Decay

MAJOR DEFECT- All decay, including Blue mould, Grey mould, Gloeosporium & Bull's eye rot and other fungal developments.



Decay — Major defect



Fusi — Major defect



### 3. Internal Browning

MAJOR DEFECT



Internal browning — major defect



#### 4. Apple Scab

Also known as Black Spot, *Venturia inaequalis* or *Fusicladium dendriticum*.

MAJOR DEFECT - More than three spots of 2 mm diameter on a single fruit.

---



More than three spots — major defect



3 spots or less — within tolerance



## 5. Bruising

MAJOR DEFECT When flesh is discoloured

MINOR DEFECT When greater than 1 cm<sup>2</sup>



Flesh is discoloured — major defect



Flesh is discoloured — major defect



Greater than 1 cm<sup>2</sup> — minor defect



## 6. Cracks

MAJOR DEFECT Open cracks showing the flesh of the apple

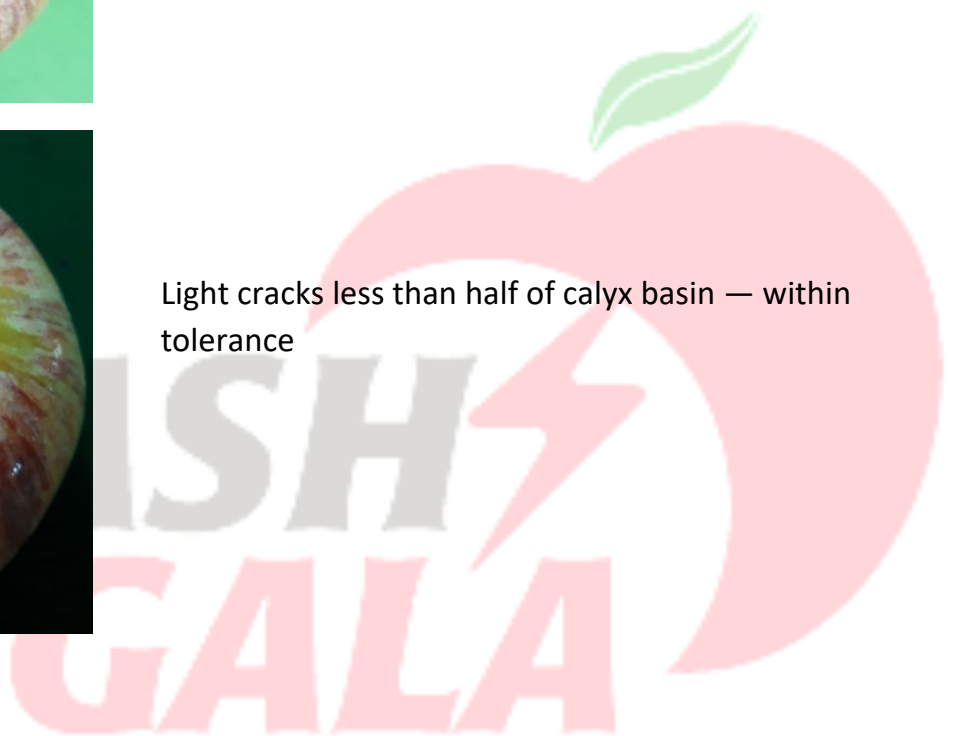
MINOR DEFECT Light healed cracks more than half of calyx basin



Open cracks — major defect



Light cracks less than half of calyx basin — within tolerance



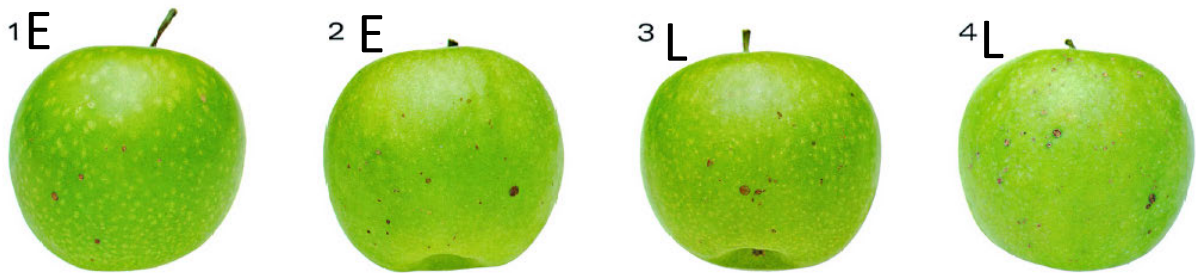
## 7. Hail Marks

MAJOR DEFECT: When skin is injured, or flesh is discoloured.

MINOR DEFECT: Export – See chart. Local - When more than three light marks less than 3 mm diameter on a single fruit and no more than 1 mm depth. (E=export, L=local & X=out)

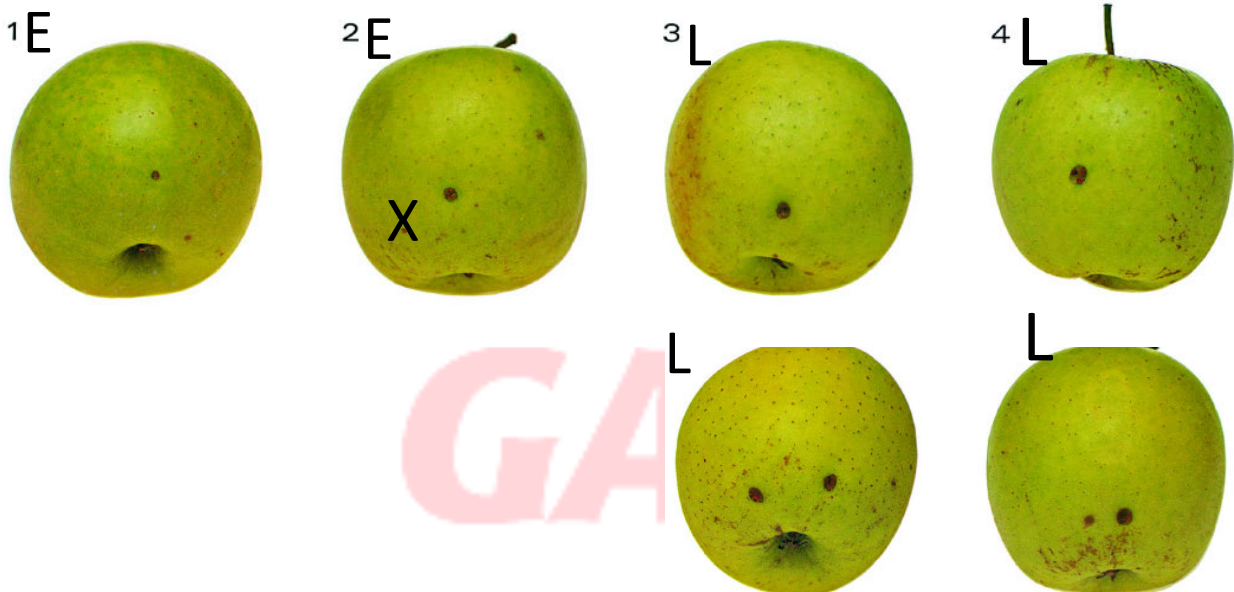
A29

Hail marks — minor defect



A30

Hail marks — major defect



MAJOR defect for EXPORT



Borderline in for EXPORT

## 8. Insect Damage

MAJOR DEFECT - When skin penetration by insect pest results in flesh discolouration

MINOR DEFECT - Superficial mark (no skin penetration) with an area greater than 3 mm



Skin penetration and flesh discoloured — major defect

## 9. Sunburn

MAJOR DEFECT When flesh is discoloured

MINOR DEFECT When blush colour is affected

Flesh is discoloured — major defect



Blends in with colour – EXPORT



## 10. Blemishes

E.g. scars, scratches, rub marks and frost injury

MINOR DEFECT - When a single mark is more than 20 mm long and a total area greater than 1 cm<sup>2</sup> on a single fruit



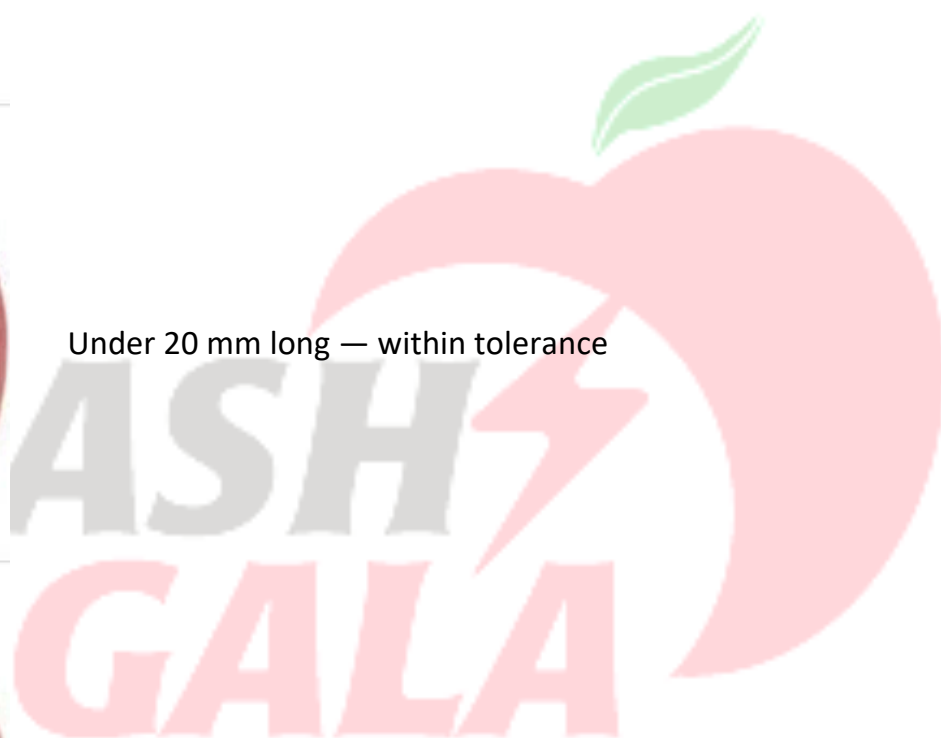
Greater than 20 mm or 1 cm<sup>2</sup> — minor defect



Under 20 mm long — within tolerance



Under 1 cm<sup>2</sup> — within tolerance



## 11. Lenticel Damage

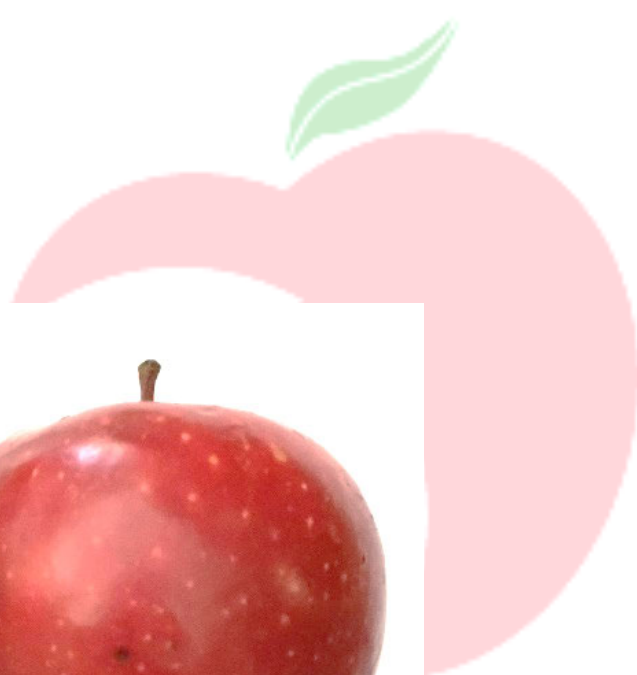
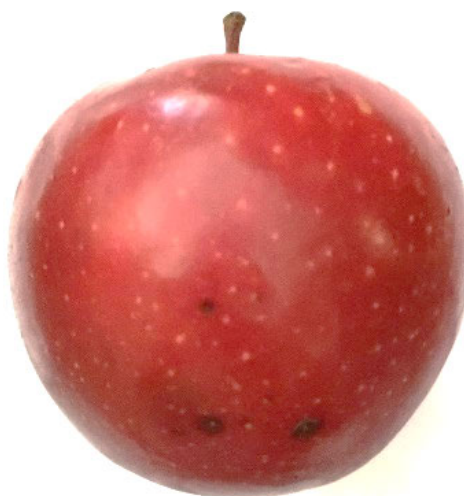
MINOR DEFECT - More than two spots greater than 1 mm diameter on a single fruit.

More than two lenticel damaged spots — minor defect

Lenticel damaged spot — within tolerance

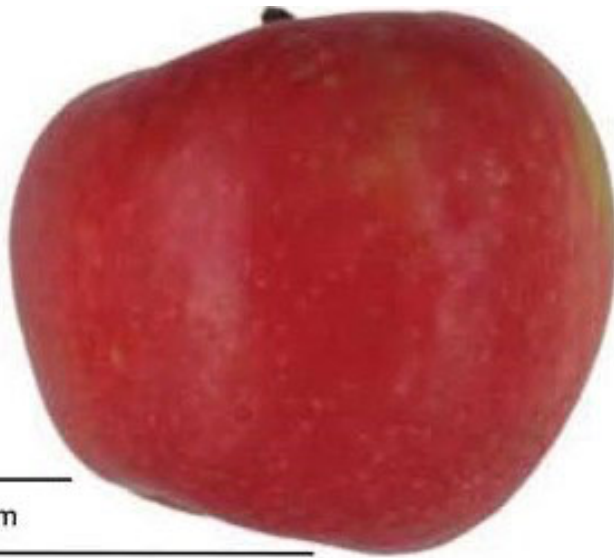


OUT FOR EXPORT



## 12. Malformation

MINOR DEFECT - Malformations more than 10 mm on a single fruit



Fruit not symmetrical more than 10 mm  
— Minor defect




**FLASH**  
**GALA**

### 13. Stem End Russet

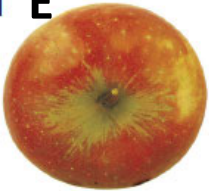
MINOR DEFECT – Export: When extended beyond the stem end or calyx basin

Russet extends beyond basin — minor defect – Export: more than picture 4 – A31, Local more than picture 10 – A31.

E= export, L=local, X=out

 STARKING TIPE/TYPER-APPELS/APPLES  
STINGELENT VERRUWING / STEM END RUSSETING  
STEL SET A. 31

1 E



2 E



 STARKING TIPE/TYPER-APPELS/APPLES  
STINGELENT VERRUWING / STEM END RUSSETING  
STEL SET A. 31

3 E



4 E



8 L



7 L



6 L



5 L



9 L



OUT for EXPORT

10 L



11 X

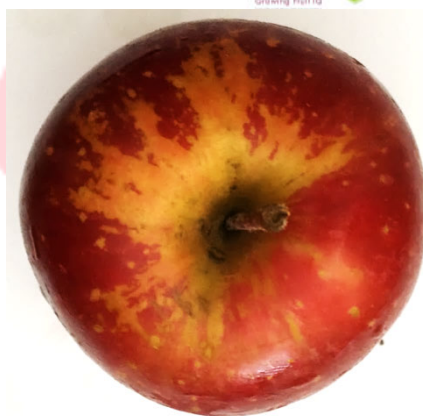


12 X



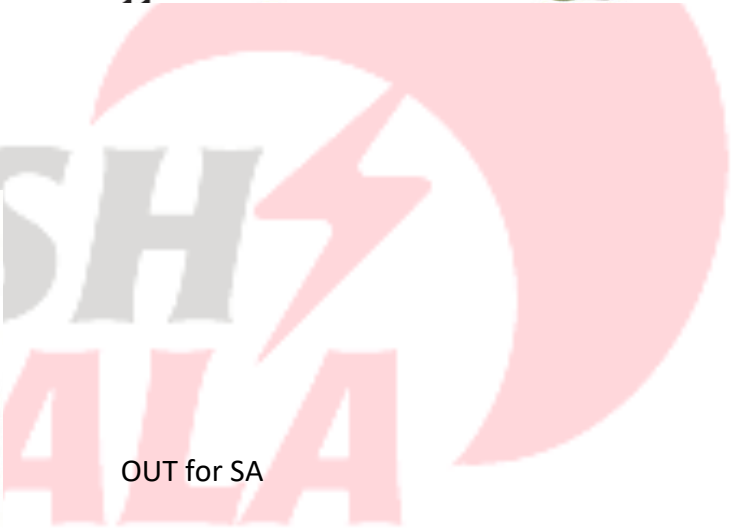
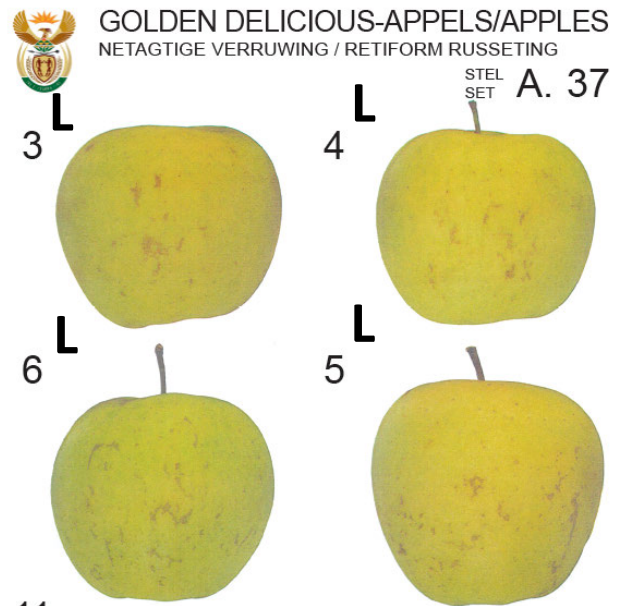
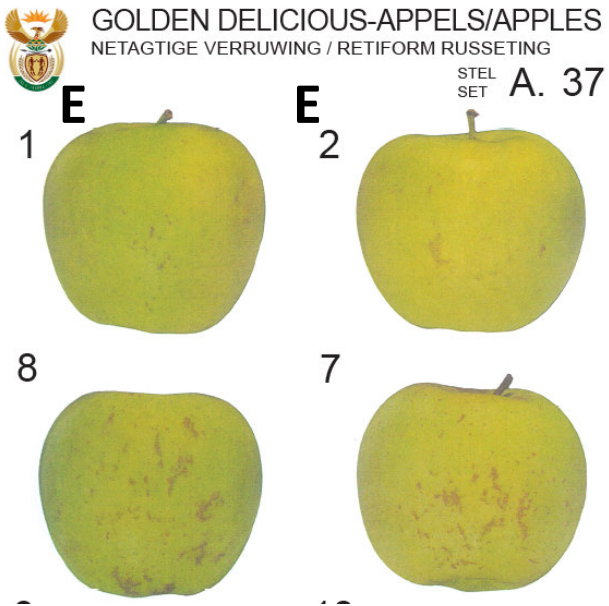
 HORTGRO  
Growing Fruit IQ

 HORTGRO  
Growing Fruit IQ



# 14. Retiform Russet

Max A37 No 2 Export, No6 local



## 15. Red Russet

MINOR DEFECT – ALL OUT for export



## 16. Solid Russet

MAJOR DEFECT- When the russet is ROUGH on >5% of surface or SMOOTH on >20% of the surface

MINOR DEFECT – For LOCAL if it does not effect the general appearance on the face

ALL OUT for EXPORT



ISI  
GA



## 17. Injuries

MAJOR DEFECT- Any broken skin



## 18. Heat Damage

MAJOR DEFECT – OUT for EXPORT and LOCAL



# 19. Starch Chart

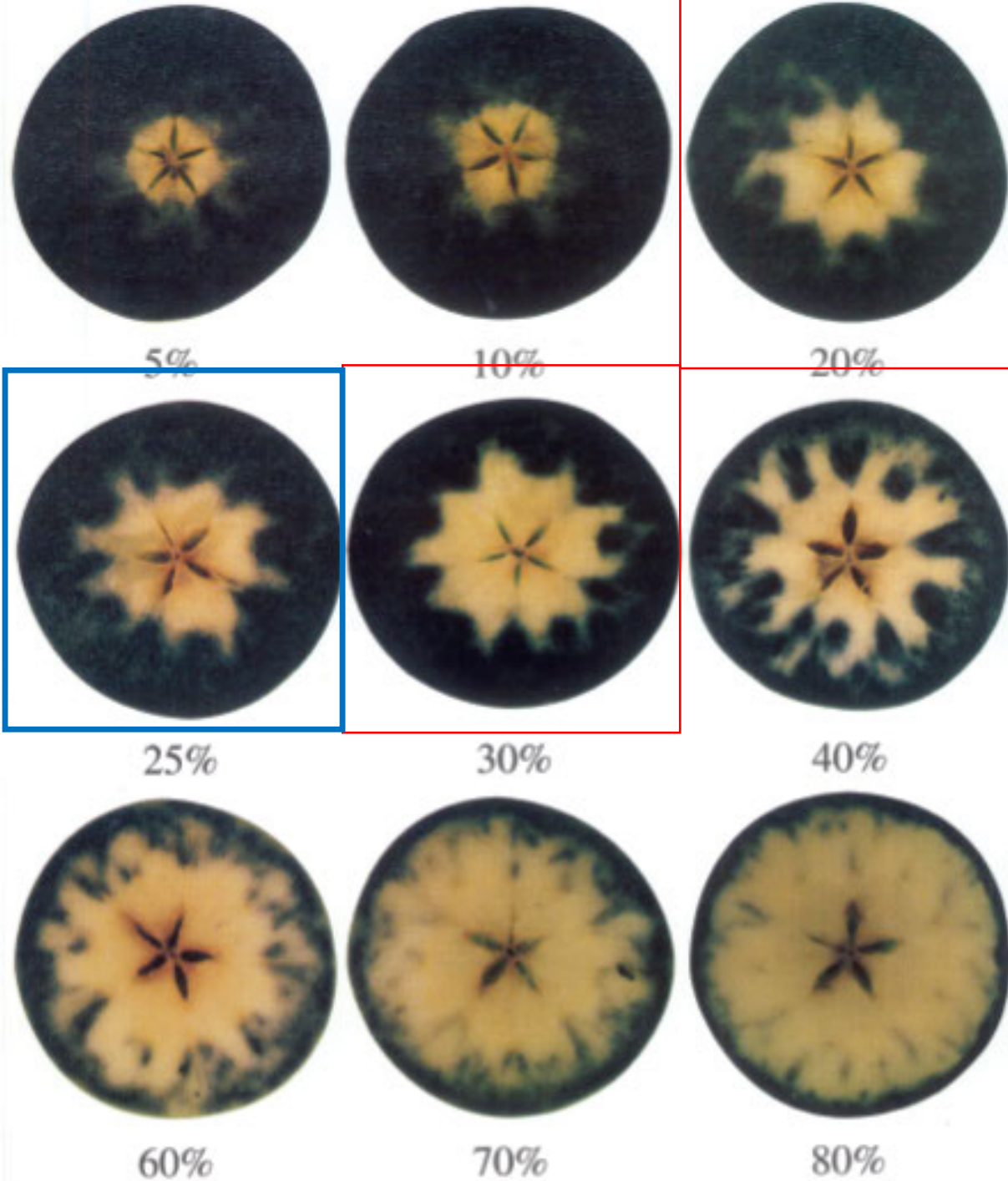
UNIFRUCO RESEARCH SERVICES (PTY) LTD  
UNIFRUCO NAVORSINGSDIENSTE (EDMS) BPK



STARCH CONVERSION CHART (POME FRUIT)  
STYSELOMSETTING KAART (KERNVRUGTE)

HORTGRO  
Growing Fruit 10

CIRCULAR TYPES / SIRKELTIPES



Harvest Maturity: Starch breakdown = 20-30%, opt 25%

# Packing Manual

## Existing packing material

### Cartons:

#### **F18X (Co-branding)**

MK4 50MM 22PAL TCAPE FLASH GALA SV A OUT W3C\_N44815\_2

#### **M18X (Co-branding, Kromco)**

MK4 50MM 22PAL KROMCO FLASH GALA SV A OUT W3C\_N46355 option 2

### General

Mk4 40MM **GENERAL** FLASH GALA BLACK SV A OUT W3C\_NX V2

### Co-branded

MK4 40MM **TRUCAPE** FLASH GALA BLACK SV A OUT W3C\_NX V2

MK4 40MM **CORE** FLASH GALA BLACK SV A OUT W3C\_NX V2

MK4 40MM **DU TOIT** FLASH GALA BLACK SV A OUT W3C\_NX

MK4 40MM **FRUITWAYS** FLASH GALA BLACK SV A OUT W3C\_NX

MK4 40MM **KROMCO** FLASH GALA BLACK SV A OUT W3C\_NX

#### **D09T (Co-branded)**

HALF CLASS 50MM TCAPE FLASH GALA A OUT W2C\_N45212

#### **M22T (Co-branded)**

339 BSHL 50MM 22PAL TCAPE FLASH GALA SV A OUT W3C\_N46165

### Bags:

#### **3kg (330)**

202203873\_Tru\_Cape\_FlashGala\_3kg

#### **1kg**

202200132\_trucape\_flash\_gala

#### **1.5kg: 205**

202005087\_trucape\_flash\_gala

#### **1.5kg: 220**

202200269\_trucape\_flash\_gala

**PnP: (+flasher)**

pnp900-21 Flash Gala Apples\_Better 1.5kg CA\_v5

Flash Gala flasher

**Spar**

64123 SPAR Freshline Flash Gala Apples\_1dot5kg\_lr

**Woolworths: (+Sticker)**

202200103\_WW\_Flash Gala Apples 1\_5kg\_FFF

Woolworths Flash Gala sticker

**Freshmark sticker**

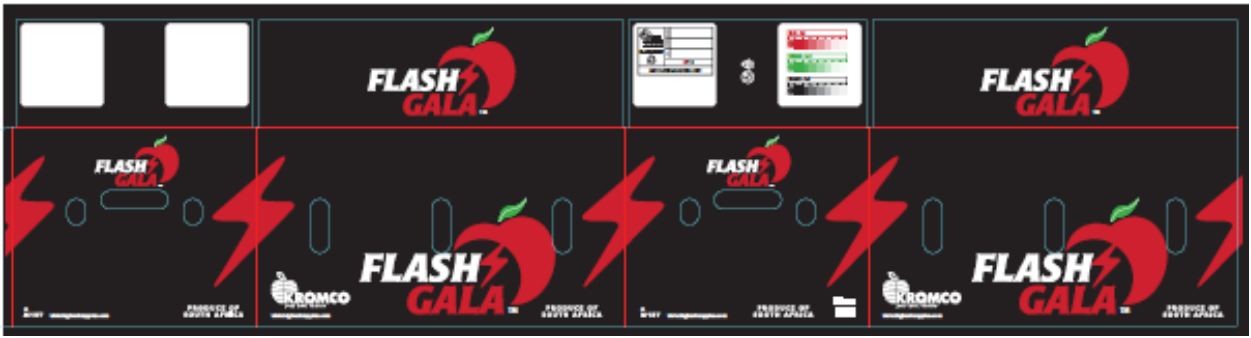
RAS21244 Flash Gala Proof Rev1

## Carton Layout

Supervent Bushel duel-branded or not



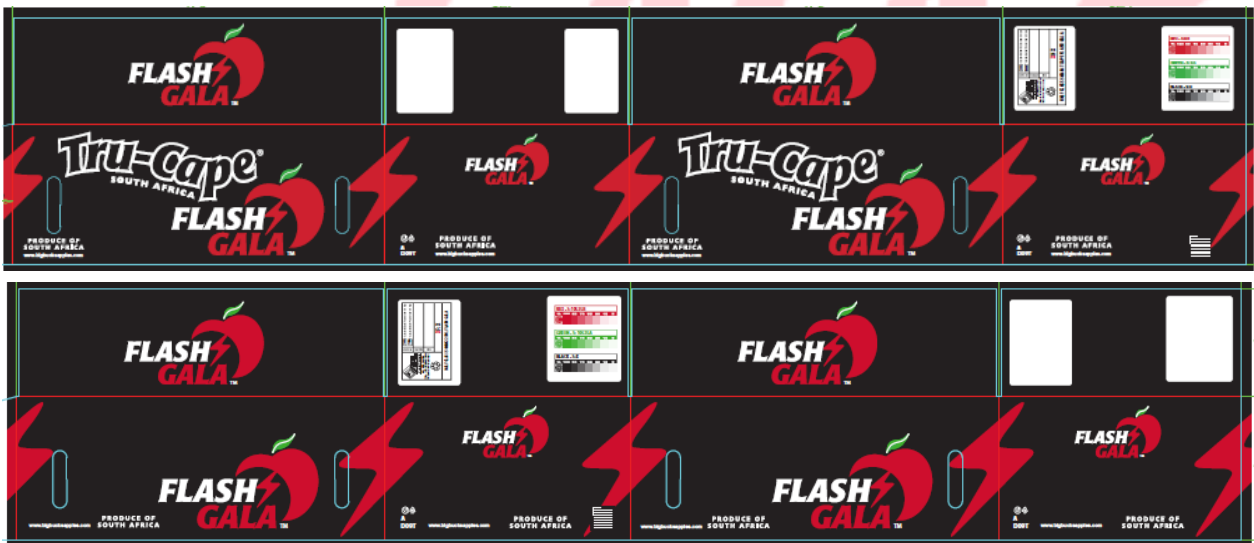




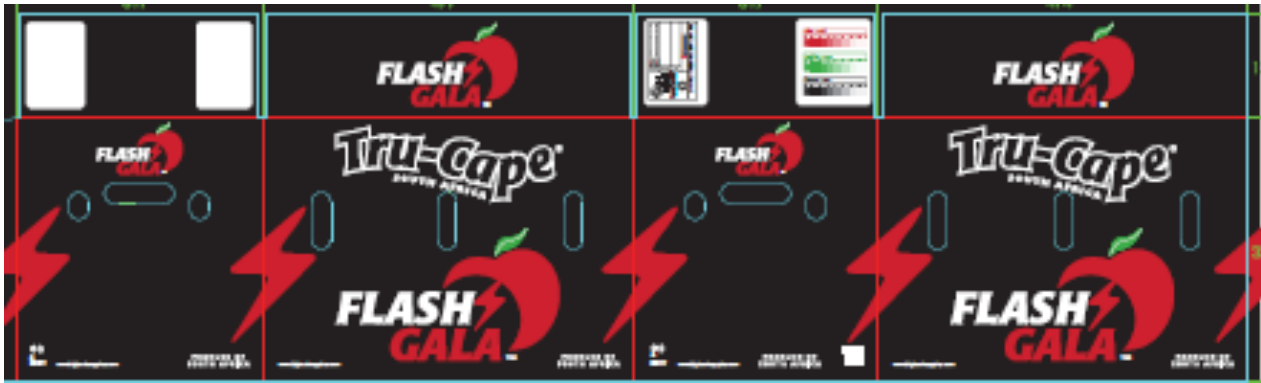
Edgevent Bushel



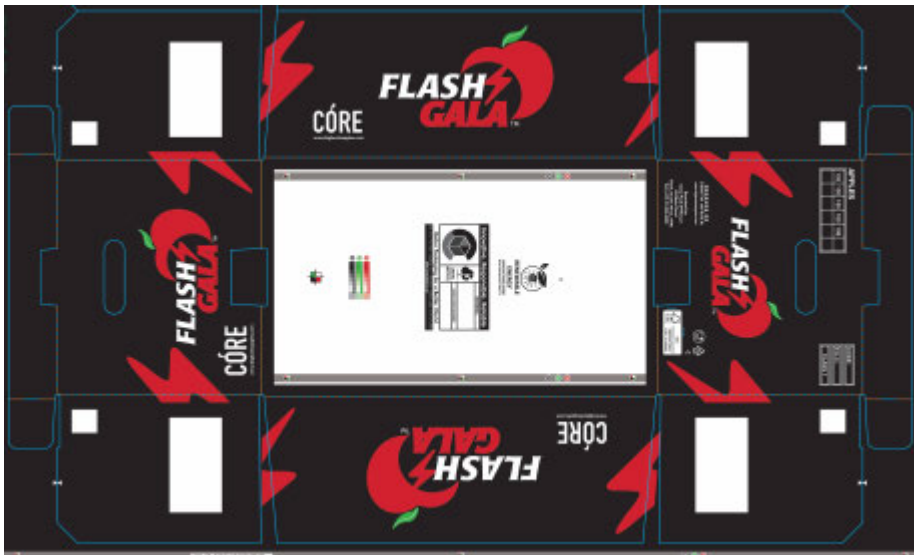
D09T/Half Mk4



Bushel carton



Econo Fixed Height layout



All fruit complying to the quality standards must be packed in Branded packing material.



Trademark

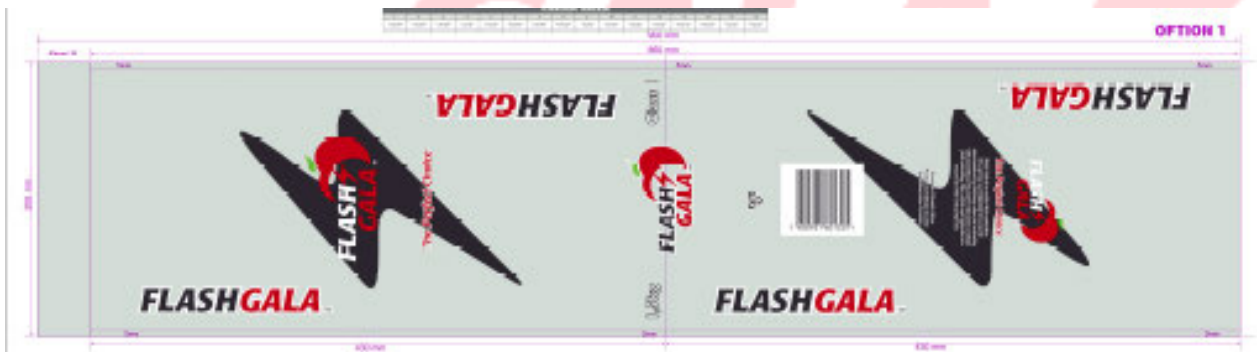


# Bag Layout



All colours solid

1.5 kg Bag



1.0 kg bag



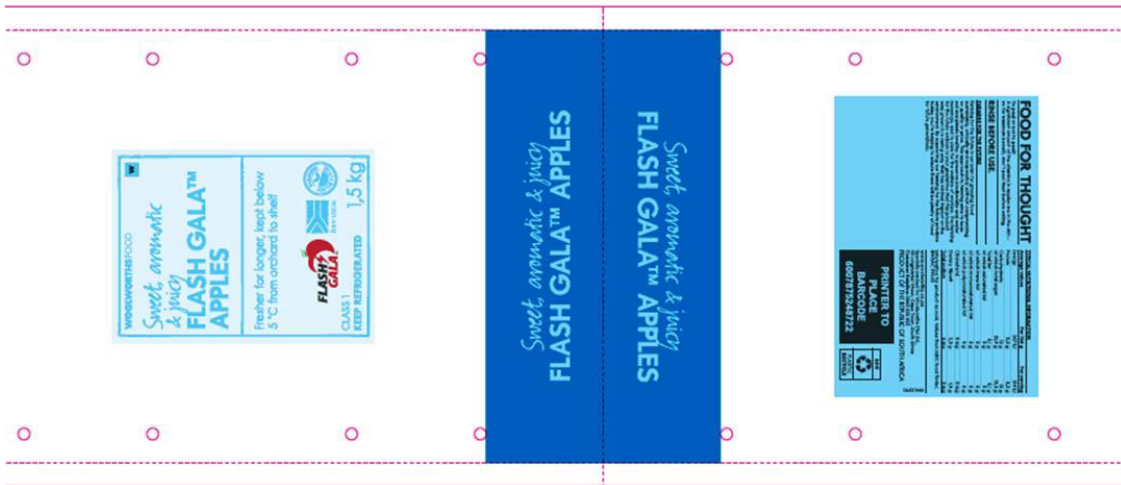
3.0 kg bag



## Retail Bags

### Woolworths

1.5 kg

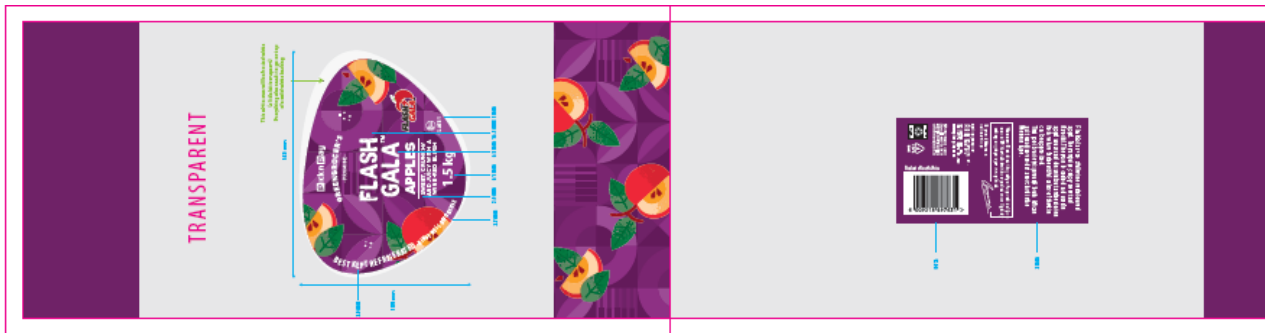


## Smalls



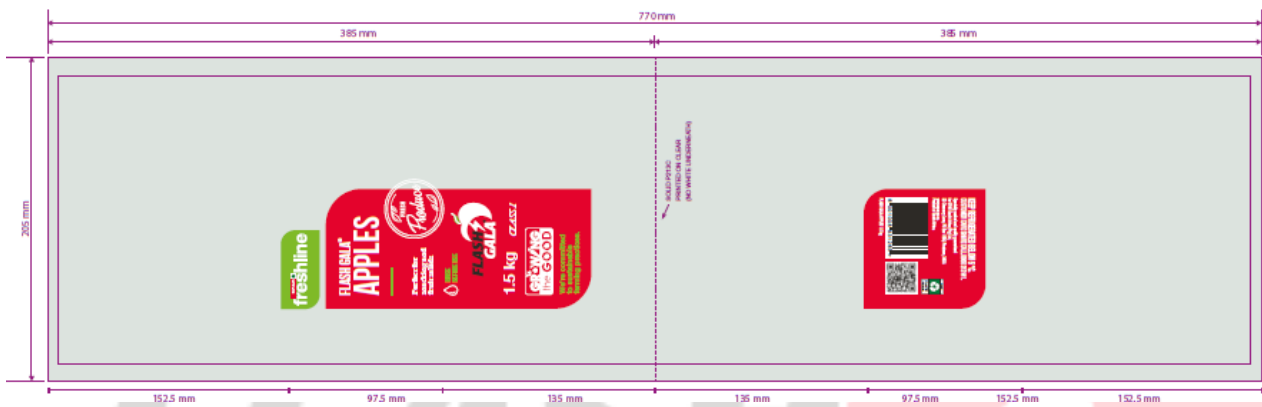
# Pick 'n Pay

1.5 kg



# SPAR

1.5 Kg



# Freshmark

1.5 Kg



# Freshmark Flasher



## Fruit Label Layout

Red colour (Pantone 186C), Green colour (Pantone 361C) on white background.



At least 95% of all fruit must have the correct label. Counts 216, 198 and 180 no labelling.

## Trays

Only 110 GSM black laminated polystyrene trays may be used. The trays must not be older than 2 months.



## Bubble Pad



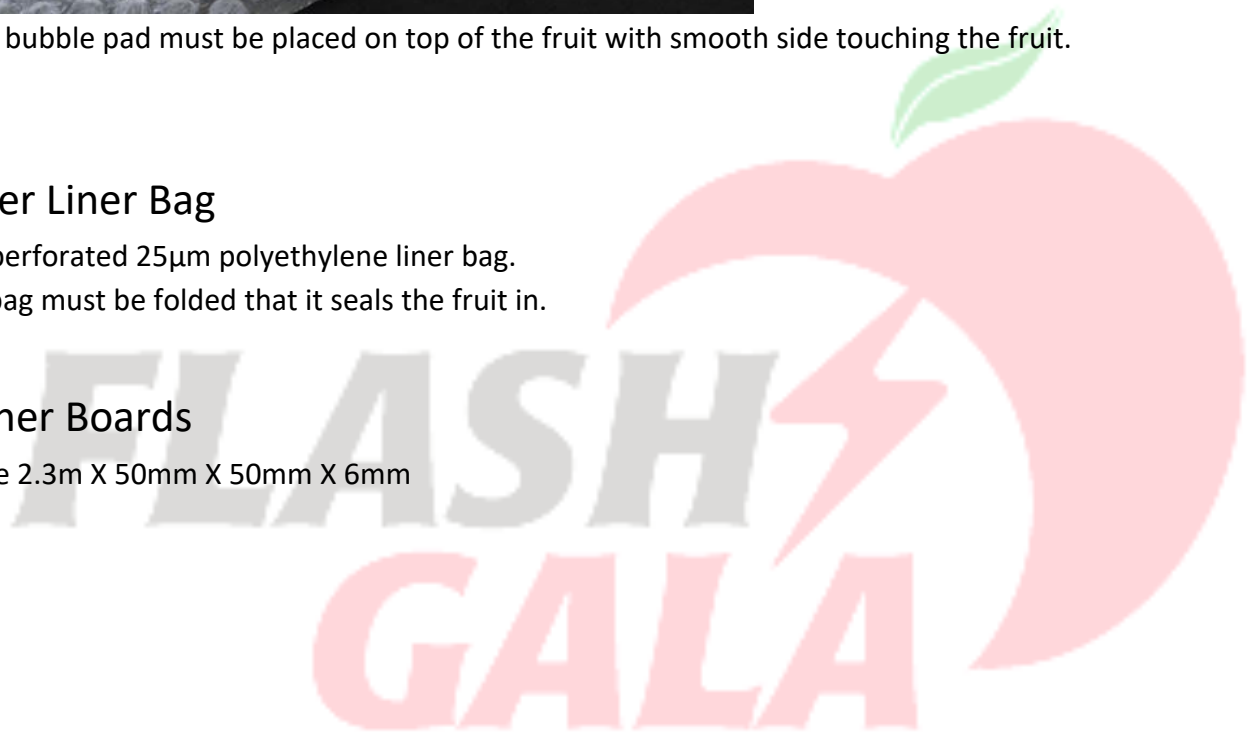
Clear bubble pad must be placed on top of the fruit with smooth side touching the fruit.

## Outer Liner Bag

Red perforated 25µm polyethylene liner bag.  
The bag must be folded that it seals the fruit in.

## Corner Boards

White 2.3m X 50mm X 50mm X 6mm



# Packing Format

## Presentation

All fruit to be packed with full red side up and fruit labels facing.

## Direction

First impression important therefor pack fruit facing same direction



GALA

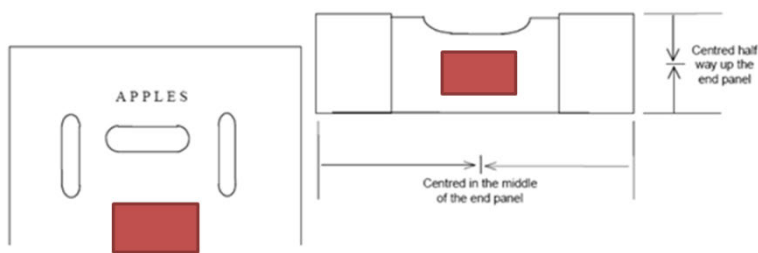
**BELOW IS NOT DESIREBLE FOR (SUPREME) QUALITY**



## Box End Label

Placement of Carton Labels on End Panels

- Carton labels must be placed in the positions detailed in Figure 1 for the various pack types.
- To be placed neat and straight on the end of the carton.



**Figure 1: Placement of Carton Labels on End Panels shown by red square**

All box end labels must indicate:

- Class
- PUC number and packing number
- Use registered codes and specifications
- Cultivar name
- BigBucks Flash Gala <sup>TM</sup>.
- Count (i.e. number of pieces of fruit in the pack) or fruit weight and/or fruit diameter

- Commodity
- Apples/Pears
- Exporter address
- “Produce of South Africa”
- Global GAP number

## GlobalGap Number

The 13 digit GlobalGap Number (GGN) must be printed on each carton end panel.

## Date Code

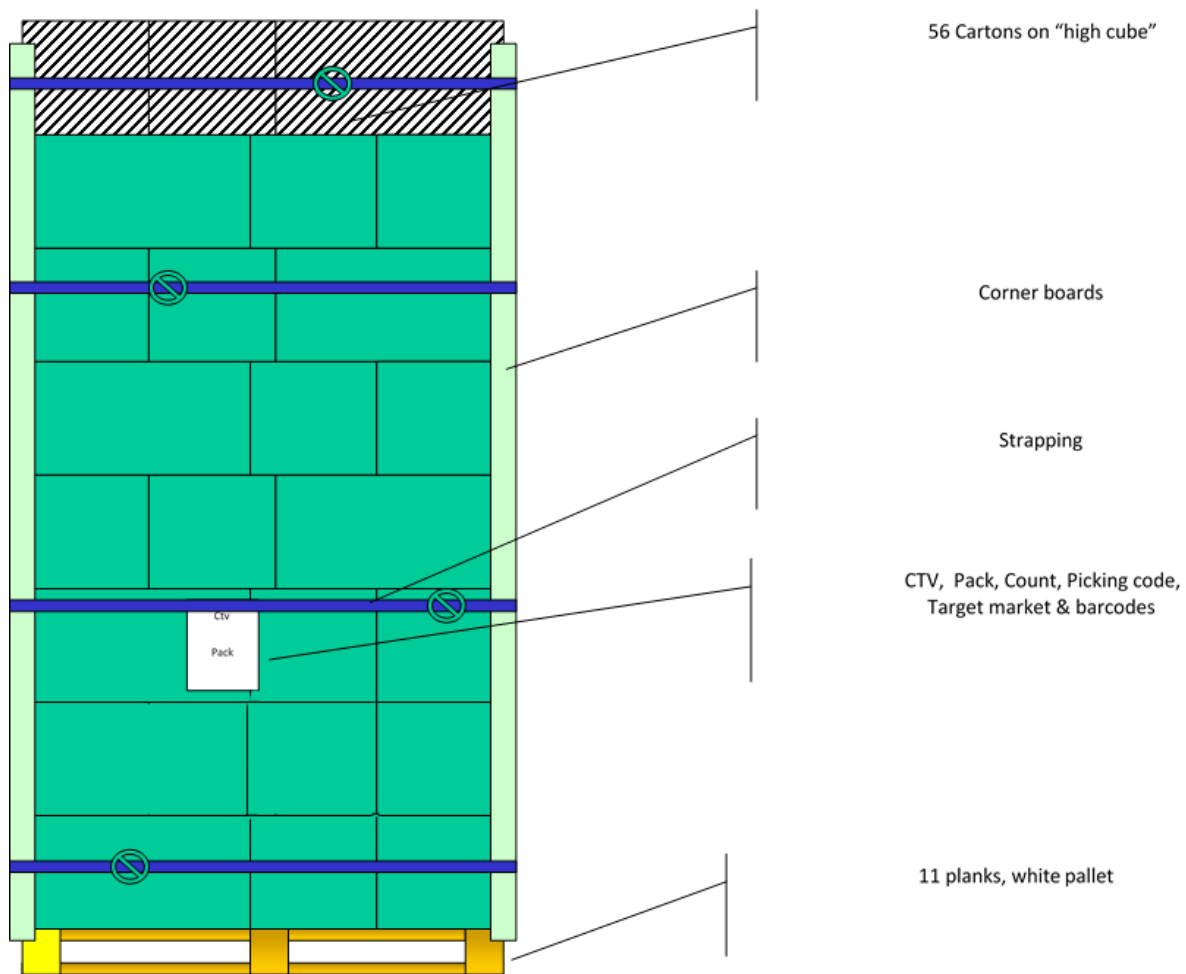
| Date code   | 2   | 3  | 2            | 1  |
|---|---|--|--------------|--|
| <b>Explanation</b>  | Last digit for the week<br>(Place after last digit to make the week date) | Day code: Beginning of the week will be 1 = Monday | Picking code | First digit of the week<br>(place in front of first number of this code) |
| <b><u>Date code 2321:</u></b><br>Week = 12<br>Day Code= Wednesday<br>Picking code = Optimum fruit |   |  |              |  |

## Picking Code

### ***Picking Codes:***

- 2:** Optimum fruit – Apples: about 1/3 to 1/2 of the apple’s surface coloured when starch test conducted.
- 5:** CA-fruit
- 6:** DCA plus SmartFresh
- 7:** DCA
- 8:** RA-SmartFresh
- 9:** CA-SmartFresh
- 0:** Harvista/Retain treated fruit

## Pallet format



**ENSURE** cartons on pallets are neatly stacked, with corner boards correctly used and box end labels are straight.