

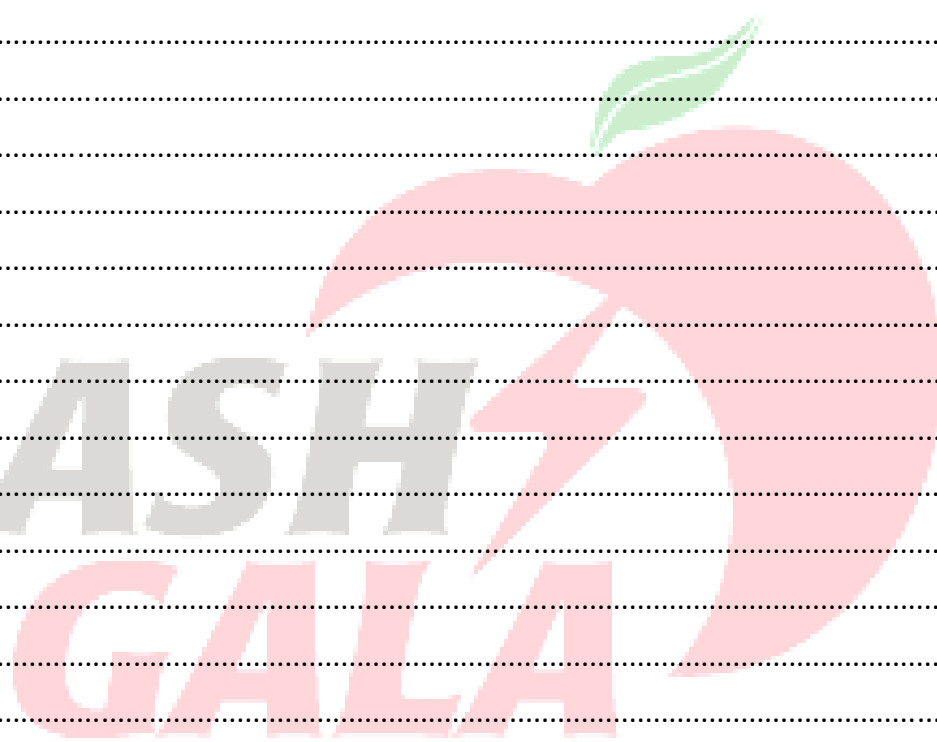
# FLASH GALA™

## Brand Manual 2025

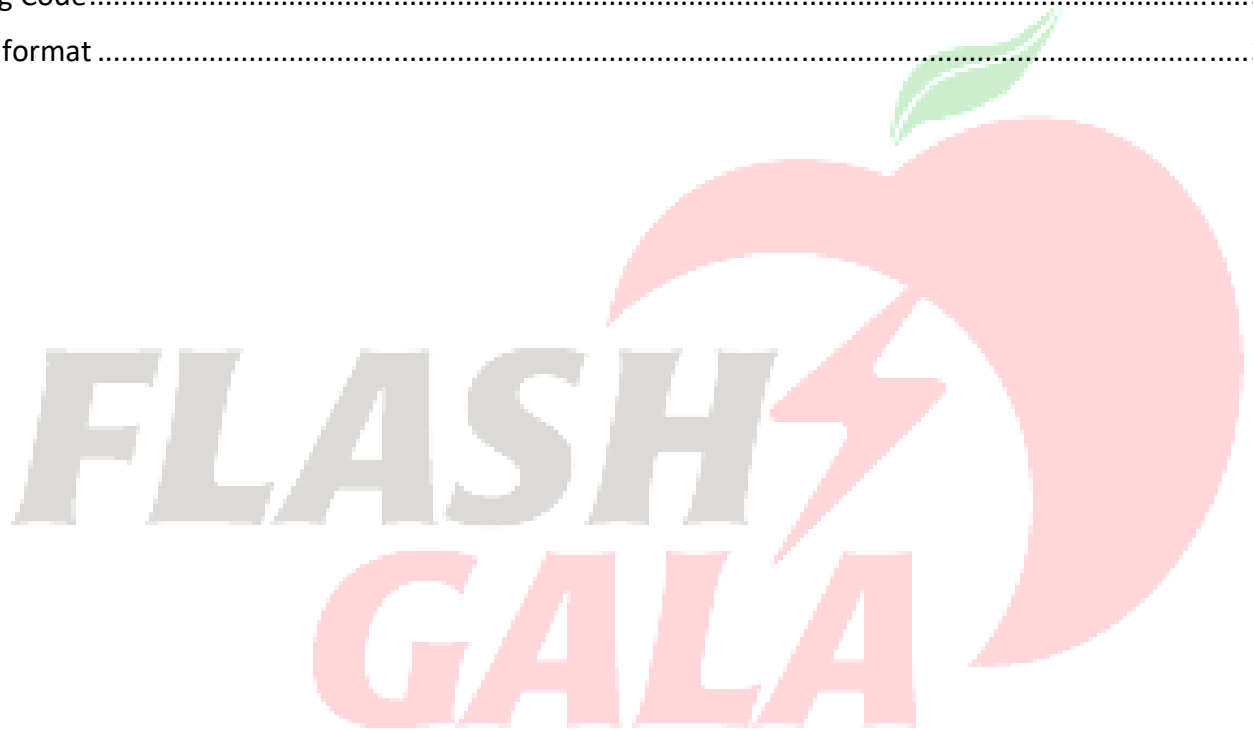


## Contents

FLASH GALA™ MINIMUM <b>INTERNATIONAL</b> QUALITY SPECIFICATIONS AT DESTINATION .....	3
<b>Note: Any fruit of the BigBucks Gala variety that meets the specifications for FLASH GALA must be packed as FLASH GALA, as per Grower Agreement</b> .....	3
FLASH GALA™ MINIMUM <b>LOCAL</b> QUALITY SPECIFICATIONS AT DESTINATION .....	4
<b>Note: Any fruit of the BigBucks Gala variety that meets the specifications for FLASH GALA must be packed as FLASH GALA, as per Grower Agreement</b> .....	4
Colour Chart.....	5
PHOTOS OF SELECTED CHARACTERISTICS AND DEFECTS .....	6
1. Colour.....	6
2. Decay.....	7
3. Internal Browning .....	8
4. Apple Scab.....	9
5. Bruising .....	10
6. Cracks .....	11
7. Hail Marks .....	12
8. Insect Damage.....	13
9. Sunburn.....	13
10. Blemishes .....	14
11. Lenticel Damage.....	15
12. Malformation.....	16
13. Stem End Russet .....	17
14. Retiform Russet .....	18
15. Red Russet.....	19
16. Solid Russet.....	20
17. Injuries .....	21
18. Heat Damage .....	21
19. Starch Chart .....	22
Packing Manual.....	23
Carton Layout.....	24
Trademark.....	28
Bag Layout.....	29
Fruit Label Layout .....	33



Trays.....	33
Bubble Pad .....	34
Outer Liner Bag .....	34
Corner Boards .....	34
Packing Format .....	35
Presentation.....	35
Direction.....	35
Box End Label.....	36
GlobalGap Number .....	37
Date Code .....	37
Picking Code.....	37
Pallet format .....	38



## FLASH GALA™ MINIMUM INTERNATIONAL QUALITY SPECIFICATIONS AT DESTINATION

CHARACTERISTICS	
Approved Variety: BigBucks Gala	
Brix: Average of 12% or greater	
Colour: Cream-pale green background, covered by greater than 80% surface colour in a continuous block, where surface colour is not interrupted by an area of more than 5 cm <sup>2</sup> . Allow tolerance of 10% for fruit with colour interruption greater than 5 cm <sup>2</sup> . Allow tolerance of 5% for fruit with less than required total surface colour. See Flash Gala™ Colour Chart R5 and better.	
Firmness (Pressure): Minimum average 6.5 kg\cm <sup>2</sup> with not more than 25% below 6kg. Measured with an 11 mm penetrometer	
DESCRIPTION OF THE DEFECT AND CLASSIFICATION	
MAJOR DEFECTS	<p><b><u>May not exceed 1% of sample size as described</u></b></p> <ul style="list-style-type: none"> <li>- Core Rot</li> <li>- Decay includes Grey mould, Blue mould, Bull’s Eye rot or any other decay</li> <li>- Internal Browning</li> <li>- Scald</li> <li>- Bitter Pit</li> <li>- Heat Damage</li> </ul> <p><b><u>May not exceed 3% of sample size as described</u></b></p> <ul style="list-style-type: none"> <li>- Lenticel Damage: When more than two spots greater than 1 mm diameter on a single fruit</li> <li>- Apple Scab. When more than three spots of 2 mm diameter on a single fruit</li> <li>- Bruising — major: When flesh is discoloured</li> <li>- Cracks — major: Open cracks showing the flesh of the apple</li> <li>- Hail Marks — major: When skin is injured, or flesh is discoloured</li> <li>- Insect Damage — major: Fresh unhealed damage or when skin penetration results in flesh discoloration or with evidence of excrement</li> <li>- Skin Penetrations such as stalk or mechanical injuries: Major any skin penetration, healed or otherwise.</li> <li>- Sunburn — major: When flesh is discoloured</li> </ul>
<b>TOTAL MAJOR MAY NOT EXCEED 3% OF SAMPLE SIZE</b>	
MINOR DEFECTS	<ul style="list-style-type: none"> <li>• Blemishes such as scars, scratches, rub marks and frost injury: When a single mark is more than 20 mm long and a total area greater than 1 cm<sup>2</sup> on a single fruit</li> <li>• Bruising — minor: When total bruised area per apple is greater than 1 cm<sup>2</sup></li> <li>• Chemical Burn: When surface colour is affected</li> <li>• Stem end cracks — minor: Light healed cracks around greater than half of stem end basin</li> <li>• Dirty fruit: Fruit must be clean but dust allowed in lower halves of stem and calyx ends</li> <li>• Hail Marks — minor: any visible hail mark.</li> <li>• Insect Damage— minor: When superficial mark (no skin penetration) with an area greater than 3 mm</li> <li>• Malformations: When malformations more than 10 mm on a single fruit</li> <li>• Net like russet: When rough to touch and surface colour is affected</li> <li>• Stem End Russet: When extended outside the stem end and calyx basin</li> <li>• Sunburn — minor: When surface colour is affected</li> </ul>
<b>TOTAL MAJOR 1% &amp; 3% + MINOR DEFECTS MAY NOT EXCEED 10% OF SAMPLE SIZE (EG. 3% MAJOR + 7% MINOR)</b>	

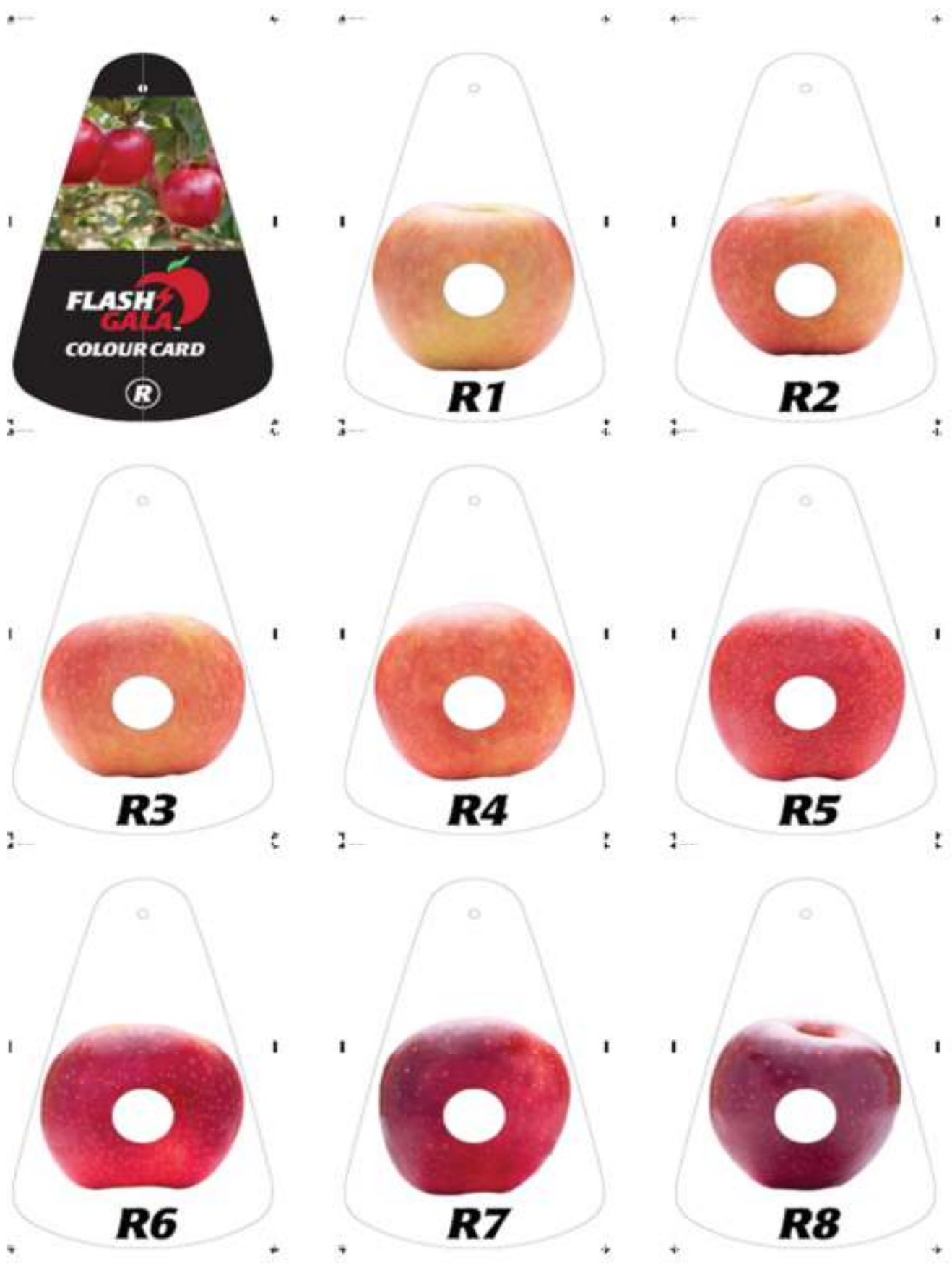
**Note: Any fruit of the BigBucks Gala variety that meets the specifications for FLASH GALA must be packed as FLASH GALA, as per Grower Agreement**

## FLASH GALA™ MINIMUM LOCAL QUALITY SPECIFICATIONS AT DESTINATION

<b>CHARACTERISTICS</b>	
Approved Varieties: BigBucks Gala	
Brix: Average of 11% or greater	
Colour: Cream-pale green background, covered by greater than 80% surface colour in a continuous block, where surface colour is not interrupted by an area of more than 5 cm <sup>2</sup> . Allow tolerance of 10% for fruit with colour interruption greater than 5 cm <sup>2</sup> . Allow tolerance of 10% for fruit. With less than required total surface colour. See Flash Gala™ Colour Chart better than R5 and better.	
Firmness (Pressure): Minimum average 6.3 kg/cm <sup>2</sup> with a 1/10 tolerance allowed to be below average pressure. Measured with an 11 mm penetrometer	
<b>DESCRIPTION OF THE DEFECT AND CLASSIFICATION</b>	
MAJOR DEFECTS	<p><b><u>May not exceed 2% of sample size as described</u></b></p> <ul style="list-style-type: none"> <li>Core Rot</li> <li>Decay includes Grey mould, Blue mould Bulls Eye rot or any other decay</li> <li>Internal Browning</li> <li>Scald</li> <li>Bitter Pit</li> <li>Heat Damage</li> </ul> <p><b><u>May not exceed 6% of sample size as described</u></b></p> <ul style="list-style-type: none"> <li>Apple Scab. When more than three spots of 2 mm diameter on a single fruit</li> <li>Lenticel Damage: When more than two spots greater than 1 mm diameter on a single fruit</li> <li>Bruising — major: When flesh is discoloured</li> <li>Cracks — major: Open cracks showing the flesh of the apple</li> <li>Hail Marks — major: When skin is injured, or flesh is discoloured</li> <li>Insect Damage — major: Fresh unhealed damage or when skin penetration results in flesh discolouration or with evidence of excrement.</li> <li>Skin Penetrations such as stalk or mechanical injuries: When two marks greater than 3 mm diameter on a single fruit.</li> <li>Sunburn — major: When flesh is discoloured, No secondary burn allowed</li> </ul> <p style="text-align: center;"><b>TOTAL MINOR MAY NOT EXCEED 12% OF SAMPLE SIZE</b></p>
MINOR DEFECTS	<ul style="list-style-type: none"> <li>Blemishes such as scars, scratches, rub marks and frost injury: When a single mark is more than 15 mm long and a total area greater than 1 cm<sup>2</sup> on a single fruit</li> <li>Bruising — minor: When total bruised area per apple is greater than 15mm</li> <li>Chemical Burn: When surface colour is affected</li> <li>Stem end cracks — minor: Light healed cracks of 1mm wide to 5mm long (if dry) allowed</li> <li>Dirty fruit: Fruit must be clean but dust allowed in lower halves of stem and calyx ends</li> <li>Hail Marks — minor: When more than three light marks less than 3 mm diameter on a single fruit and no more than 1 mm depth.</li> <li>Insect Damage— minor: When superficial mark (no skin penetration) with an area greater than 3 mm</li> <li>Malformations: When malformations more than 20 mm on a single fruit</li> <li>Net like russet: A37 no4</li> <li>Stem End Russet: A31 no 10</li> <li>Sunburn — minor: Yellow allowed – PLD Colour no 4 – No second burn</li> </ul> <p style="text-align: center;"><b>TOTAL MAJOR 2% &amp; 6% + MINOR DEFECTS MAY NOT EXCEED COMBINED DEFECTS 12% OF SAMPLE SIZE</b></p>

**Note: Any fruit of the BigBucks Gala variety that meets the specifications for FLASH GALA must be packed as FLASH GALA, as per Grower Agreement**

# Colour Chart



# PHOTOS OF SELECTED CHARACTERISTICS AND DEFECTS

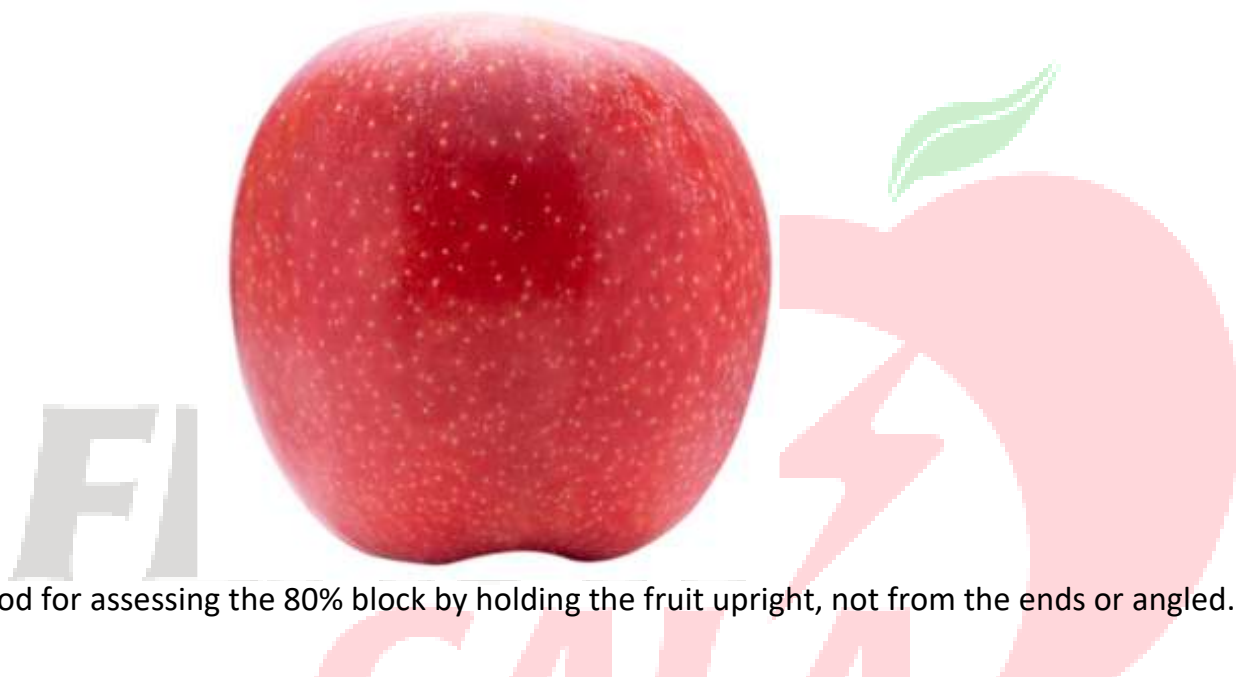
## 1. Colour

Colour: Cream-pale green background, covered by greater than 80% surface colour in a continuous block, where surface colour is not interrupted by an area of more than 5 cm<sup>2</sup>. Where possible prints R7 & R8 should be packed separately.

**Tolerance for 10% of fruit with colour interruption greater than 5 cm<sup>2</sup>.**

**Tolerance for 6% of fruit with less than the required total surface colour.**

Example of fruit with 80% colour with right intensity. The other side has to be better.



Method for assessing the 80% block by holding the fruit upright, not from the ends or angled.





## 2. Decay

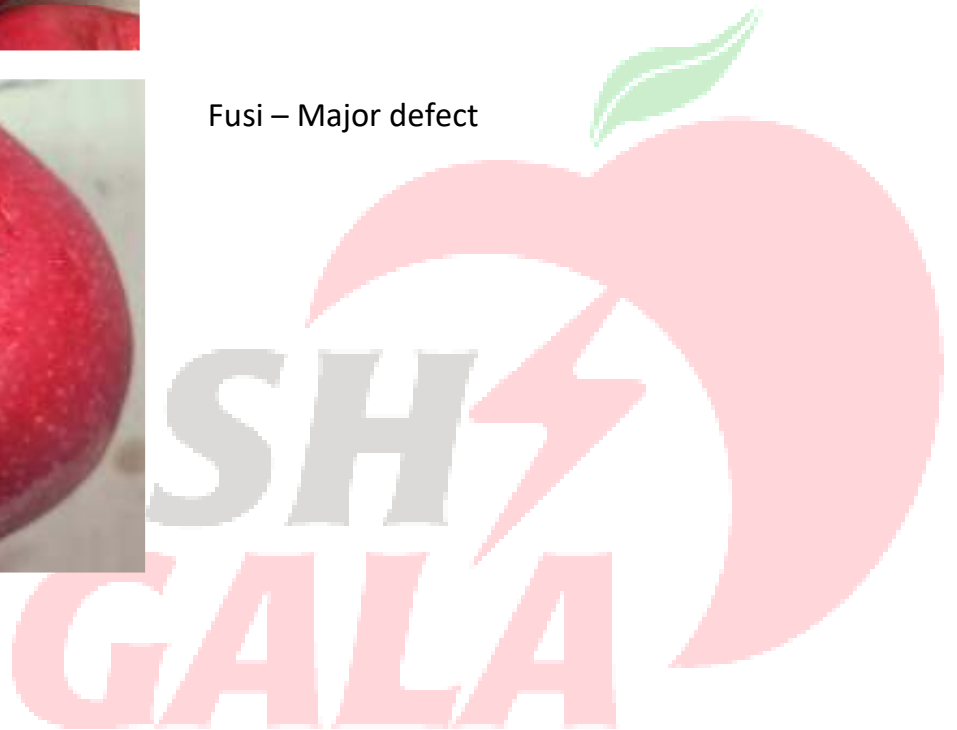
MAJOR DEFECT- All decay, including Blue mould, Grey mould, Gloeosporium & Bull's eye rot and other fungal developments.



Decay — Major defect



Fusi — Major defect





### 3. Internal Browning

MAJOR DEFECT



Internal browning — major defect



#### 4. Apple Scab

Also known as Black Spot, *Venturia inaequalis* or *Fusicladium dendriticum*.

MAJOR DEFECT - More than three spots of 2 mm diameter on a single fruit.



More than three spots — major defect



3 spots or less — within tolerance



## 5. Bruising

MAJOR DEFECT When flesh is discoloured

MINOR DEFECT When greater than 1 cm<sup>2</sup>



Flesh is discoloured — major defect



Flesh is discoloured — major defect



Greater than 1 cm<sup>2</sup> — minor defect



## 6. Cracks

MAJOR DEFECT Open cracks showing the flesh of the apple

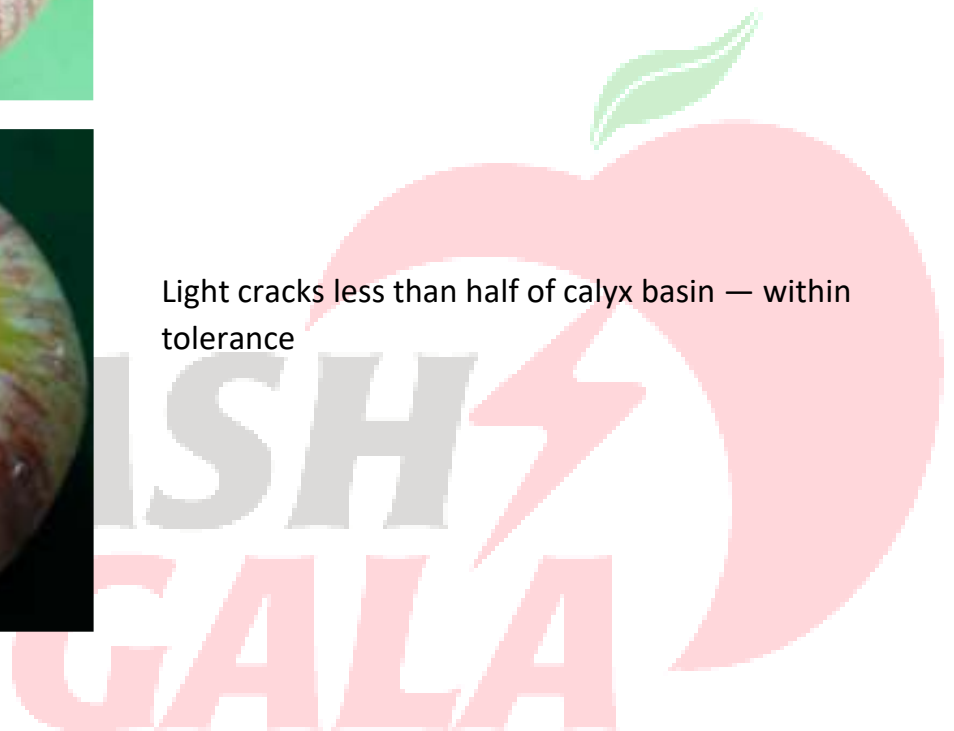
MINOR DEFECT Light healed cracks more than half of calyx basin



Open cracks — major defect



Light cracks less than half of calyx basin — within tolerance



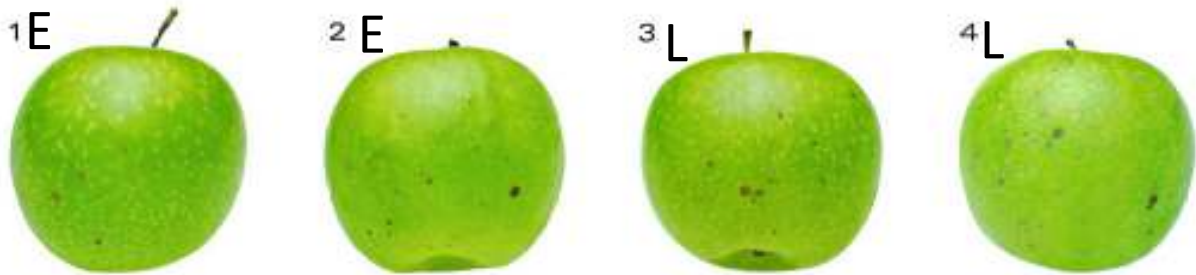
## 7. Hail Marks

MAJOR DEFECT: When skin is injured, or flesh is discoloured.

MINOR DEFECT: Export – See chart. Local - When more than three light marks less than 3 mm diameter on a single fruit and no more than 1 mm depth. (E=export, L=local & X=out)

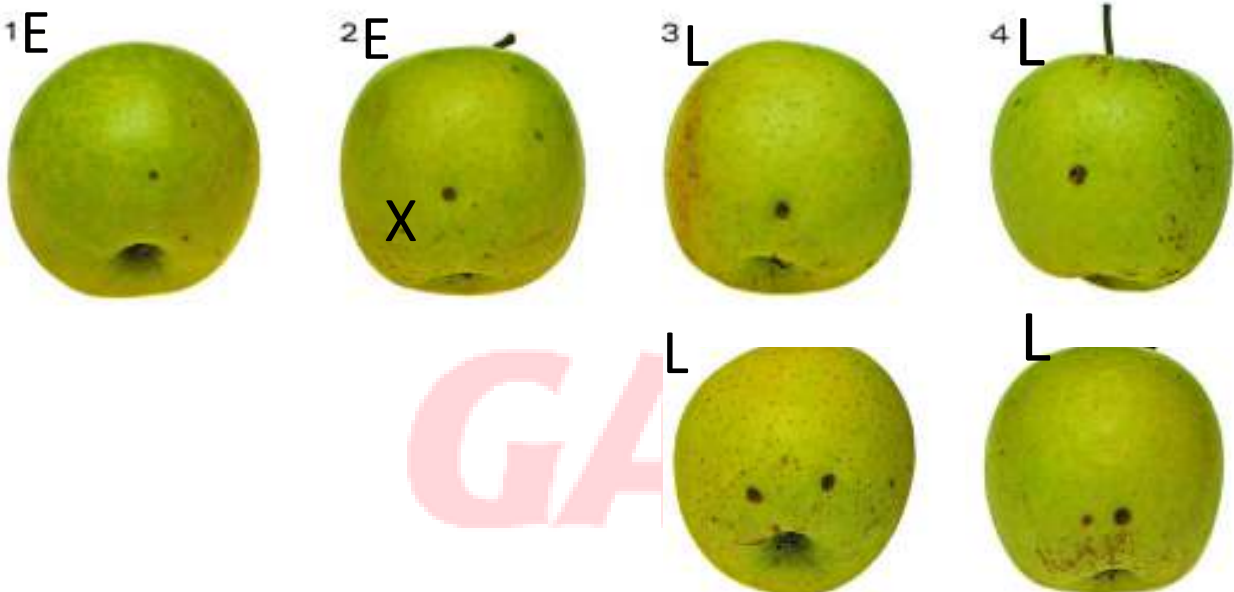
A29

Hail marks — minor defect



A30

Hail marks — major defect



MAJOR defect for EXPORT



Borderline in for EXPORT

## 8. Insect Damage

MAJOR DEFECT - When skin penetration by insect pest results in flesh discolouration

MINOR DEFECT - Superficial mark (no skin penetration) with an area greater than 3 mm



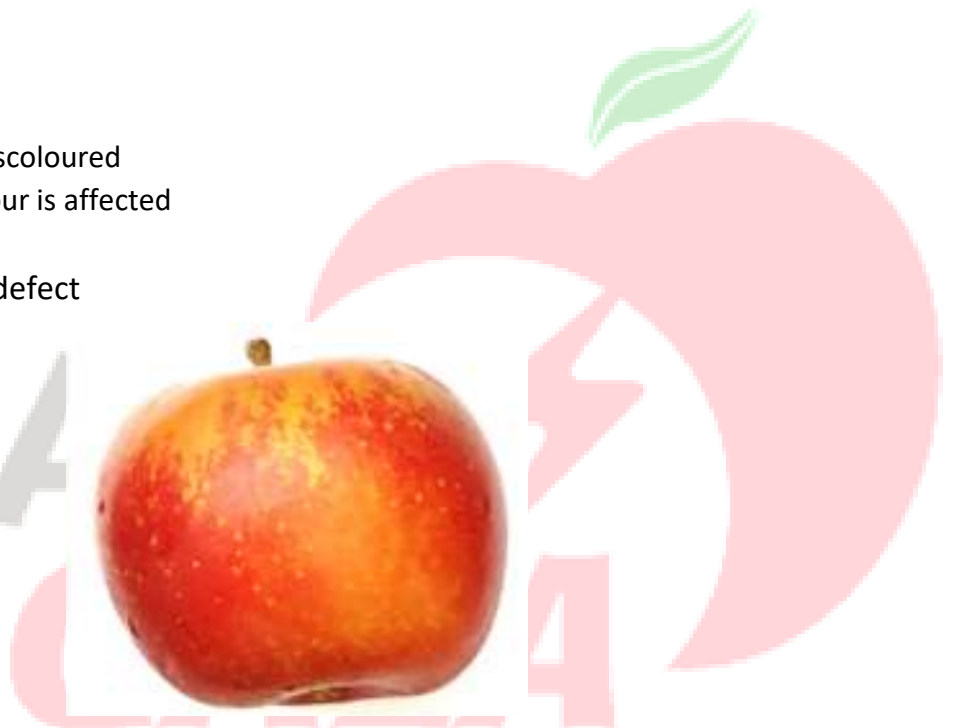
Skin penetration and flesh discoloured — major defect

## 9. Sunburn

MAJOR DEFECT When flesh is discoloured

MINOR DEFECT When blush colour is affected

Flesh is discoloured — major defect



Blends in with colour – EXPORT





## 10. Blemishes

E.g. scars, scratches, rub marks and frost injury

MINOR DEFECT - When a single mark is more than 20 mm long and a total area greater than 1 cm<sup>2</sup> on a single fruit



Greater than 20 mm or 1 cm<sup>2</sup> — minor defect

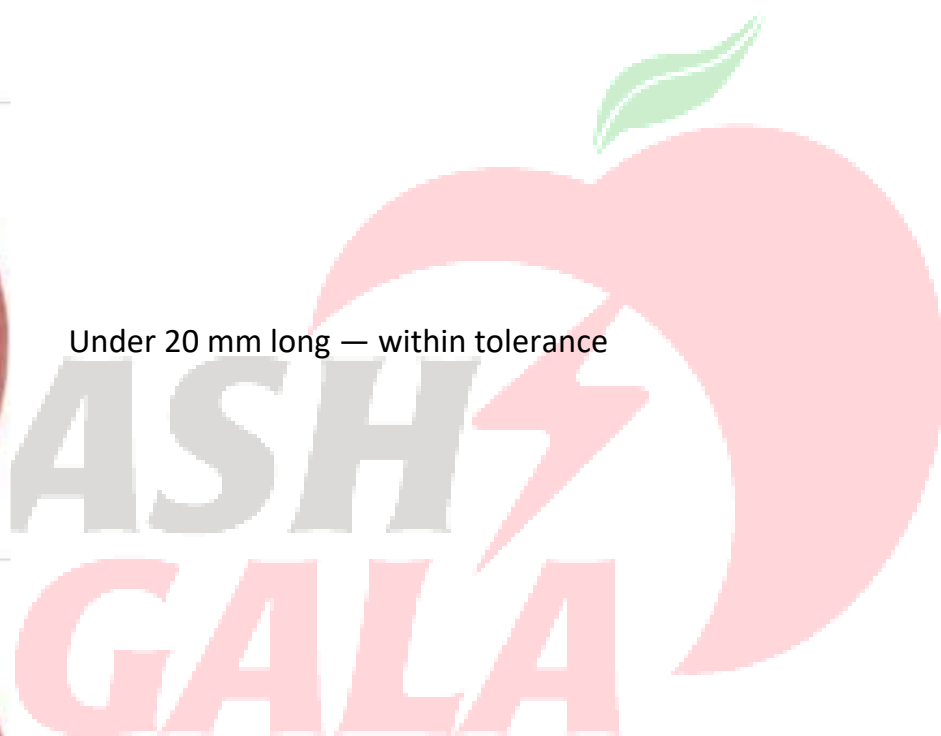


Under 20 mm long — within tolerance



Under 1 cm<sup>2</sup> — within tolerance

---





## 11. Lenticel Damage

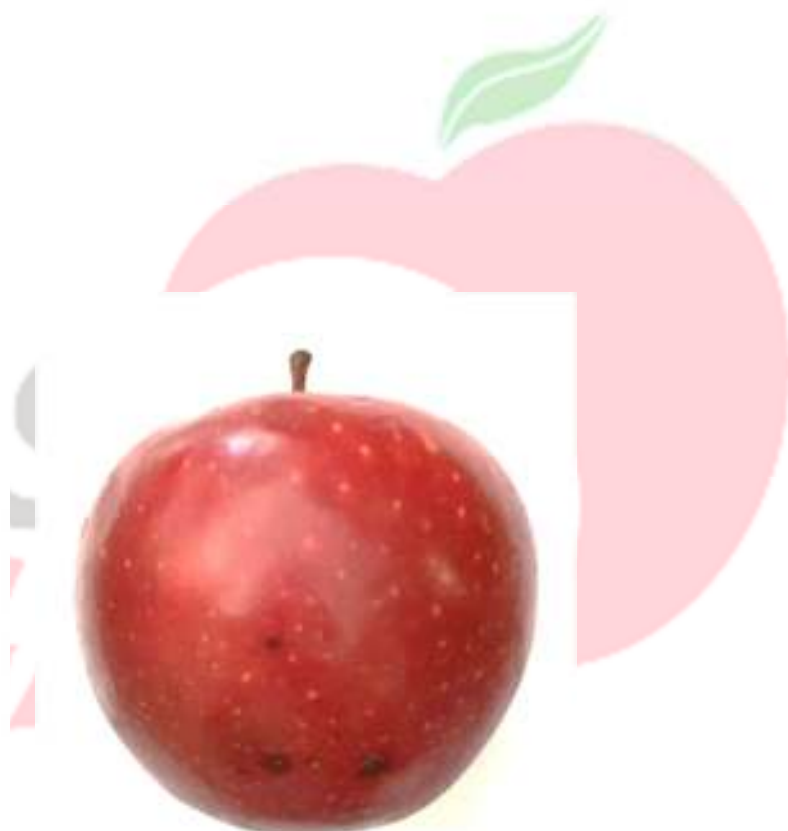
MINOR DEFECT - More than two spots greater than 1 mm diameter on a single fruit.

More than two lenticel damaged spots — minor defect

Lenticel damaged spot — within tolerance

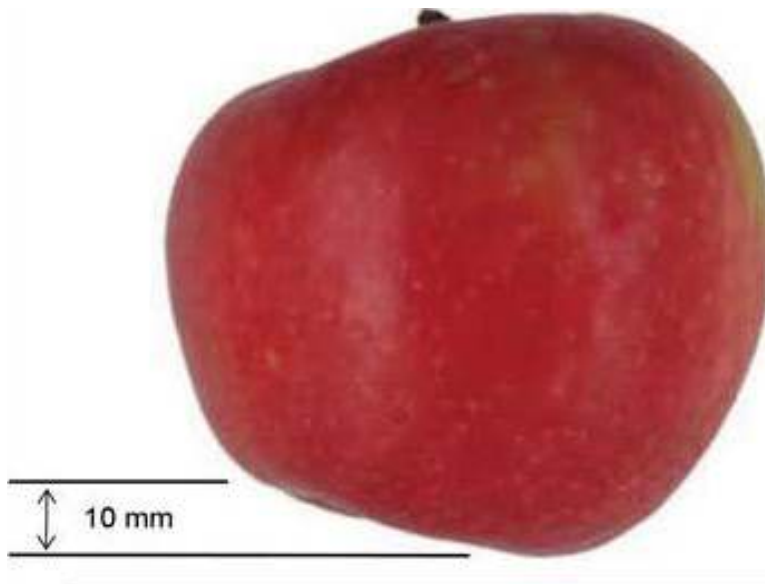


OUT FOR EXPORT



## 12. Malformation

MINOR DEFECT - Malformations more than 10 mm on a single fruit



Fruit not symmetrical more than 10 mm  
— Minor defect



**FLASH**  
**GALA**

### 13. Stem End Russet

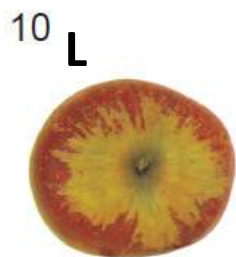
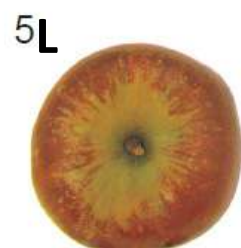
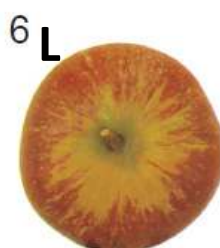
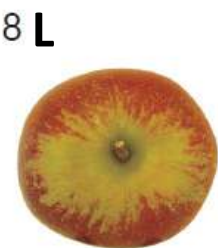
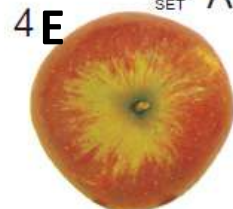
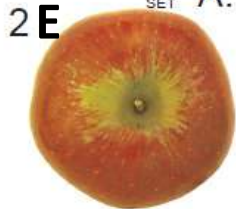
MINOR DEFECT – Export: When extended beyond the stem end or calyx basin

Russet extends beyond basin — minor defect – Export: more than picture 4 – A31, Local more than picture 10 – A31.

E= export, L=local, X=out

 STARKING TIPE/TYPE-APPELS/APPLES  
STINGELENT VERRUWING / STEM END RUSSETING  
STEL SET A. 31

 STARKING TIPE/TYPE-APPELS/APPLES  
STINGELENT VERRUWING / STEM END RUSSETING  
STEL SET A. 31



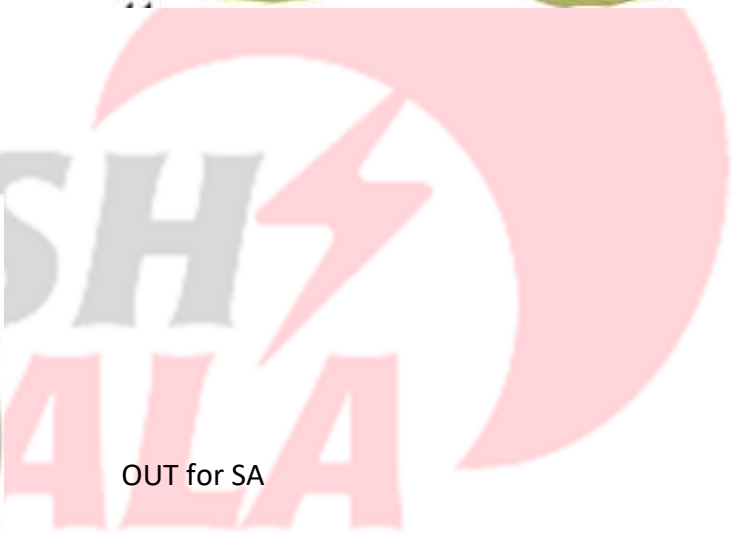
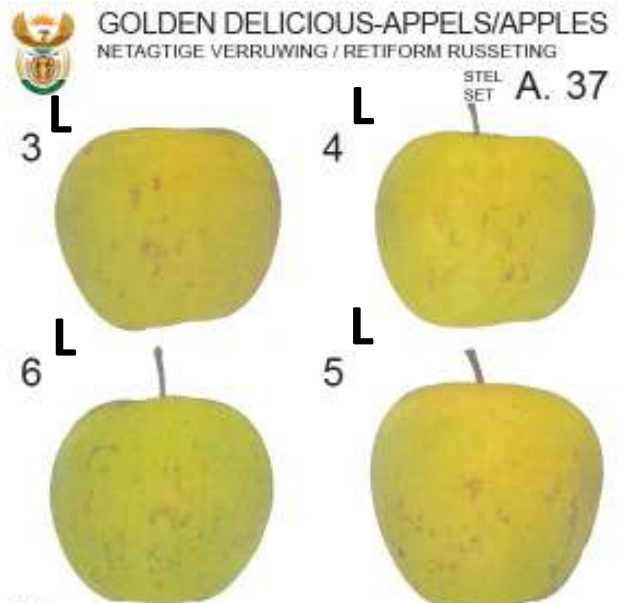
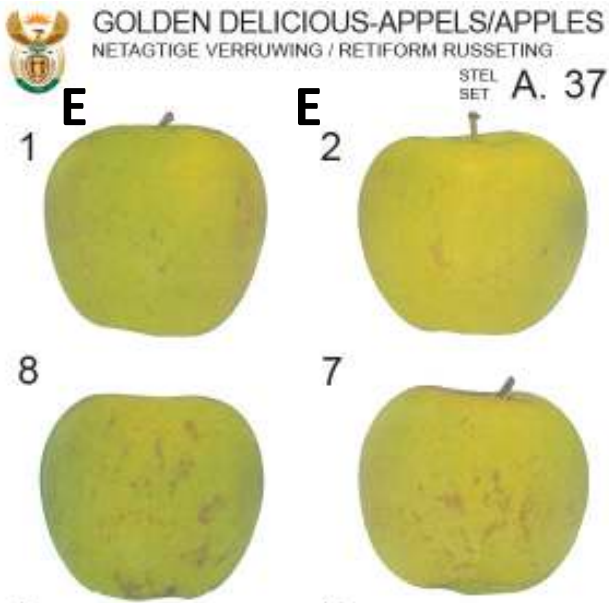
 Hortgro  
Grootes Fruit 12

 Hortgro  
Grootes Fruit 12



# 14. Retiform Russet

Max A37 No 2 Export, No6 local



## 15. Red Russet

MINOR DEFECT – ALL OUT for export





## 16. Solid Russet

MAJOR DEFECT- When the russet is ROUGH on >5% of surface or SMOOTH on >20% of the surface

MINOR DEFECT – For LOCAL if it does not effect the general appearance on the face

ALL OUT for EXPORT



## 17. Injuries

MAJOR DEFECT- Any broken skin



## 18. Heat Damage

MAJOR DEFECT – OUT for EXPORT and LOCAL





# 19. Starch Chart

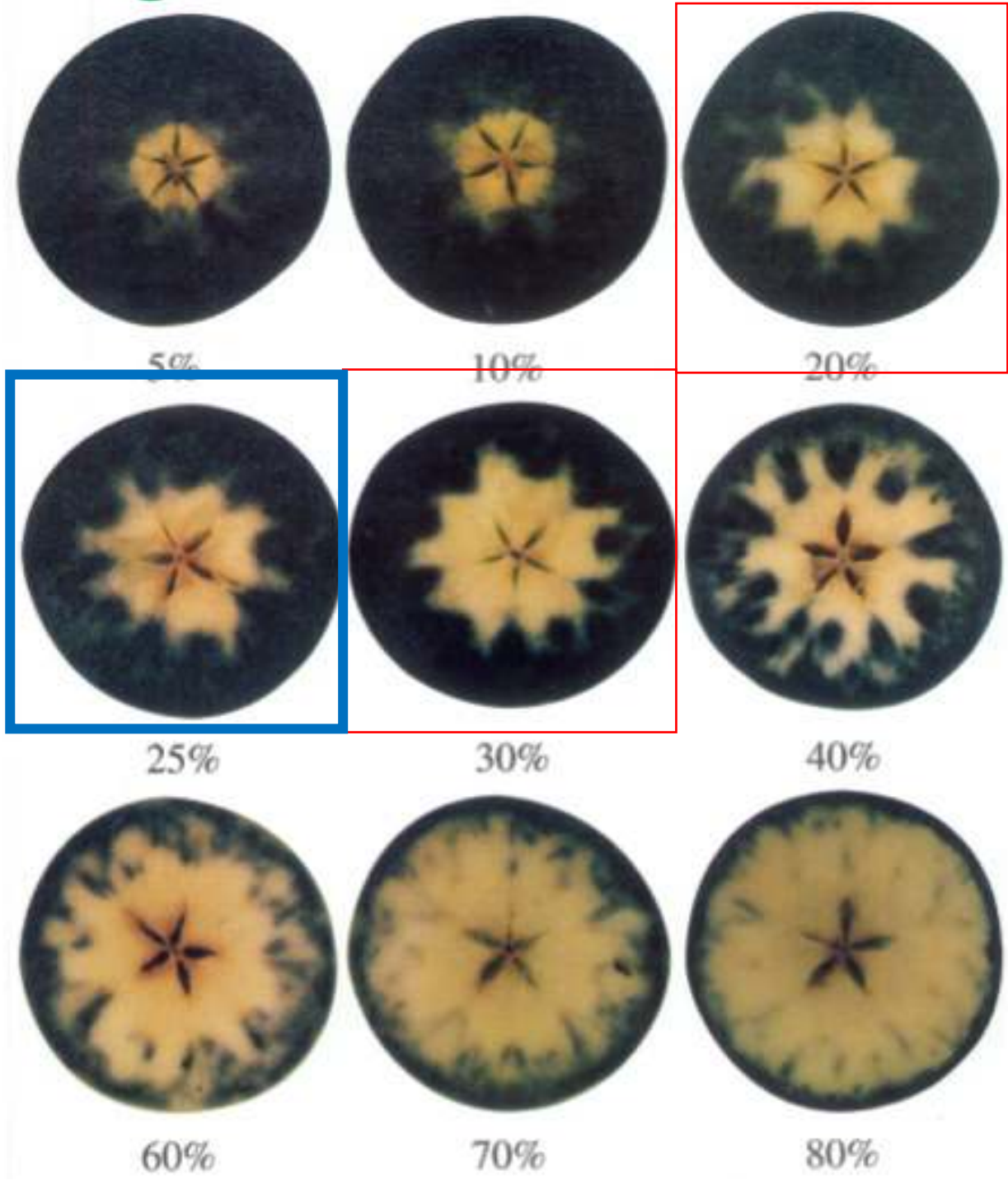
UNIFRUCO RESEARCH SERVICES (PTY) LTD  
UNIFRUCO NAVORSINGSDIENSTE (EDMS) BPK



STARCH CONVERSION CHART (POME FRUIT)  
STYSELOMSETTING KAART (KERNVRUGTE)



CIRCULAR TYPES / SIRKELTIPES



Harvest Maturity: Starch breakdown = 20-30%, opt 25%

# Packing Manual

## Existing packing material

### Cartons:

#### **F18X (Co-branding)**

MK4 50MM 22PAL TCAPE FLASH GALA SV A OUT W3C\_N44815\_2

#### **M18X (Co-branding, Kromco)**

MK4 50MM 22PAL KROMCO FLASH GALA SV A OUT W3C\_N46355 option 2

### General

Mk4 40MM **GENERAL** FLASH GALA BLACK SV A OUT W3C\_NX V2

### Co-branded

MK4 40MM **TRUCAPE** FLASH GALA BLACK SV A OUT W3C\_NX V2

MK4 40MM **CORE** FLASH GALA BLACK SV A OUT W3C\_NX V2

MK4 40MM **DU TOIT** FLASH GALA BLACK SV A OUT W3C\_NX

MK4 40MM **FRUITWAYS** FLASH GALA BLACK SV A OUT W3C\_NX

MK4 40MM **KROMCO** FLASH GALA BLACK SV A OUT W3C\_NX

#### **D09T (Co-branded)**

HALF CLASS 50MM TCAPE FLASH GALA A OUT W2C\_N45212

#### **M22T (Co-branded)**

339 BSHL 50MM 22PAL TCAPE FLASH GALA SV A OUT W3C\_N46165

### Bags:

#### **3kg (330)**

202203873\_Tru\_Cape\_FlashGala\_3kg

#### **1kg**

202200132\_trucape\_flash\_gala

#### **1.5kg: 205**

202005087\_trucape\_flash\_gala

#### **1.5kg: 220**

202200269\_trucape\_flash\_gala

**PnP: (+flasher)**

pnp900-21 Flash Gala Apples\_Better 1.5kg CA\_v5

Flash Gala flasher

**Spar**

64123 SPAR Freshline Flash Gala Apples\_1dot5kg\_lr

**Woolworths: (+Sticker)**

202200103\_WW\_Flash Gala Apples 1\_5kg\_FFF

Woolworths Flash Gala sticker

**Freshmark sticker**

RAS21244 Flash Gala Proof Rev1

**Carton Layout**

Supervent Bushel duel-branded or not







Edgevent Bushel



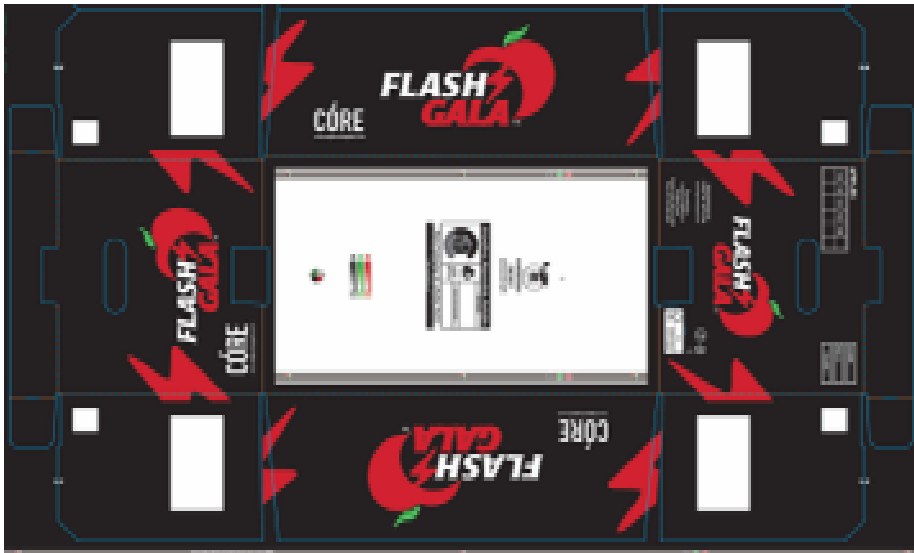
D09T/Half Mk4



Bushel carton



Econo Fixed Height layout



All fruit complying to the quality standards must be packed in Branded packing material.



Trademark





# Bag Layout



All colours solid

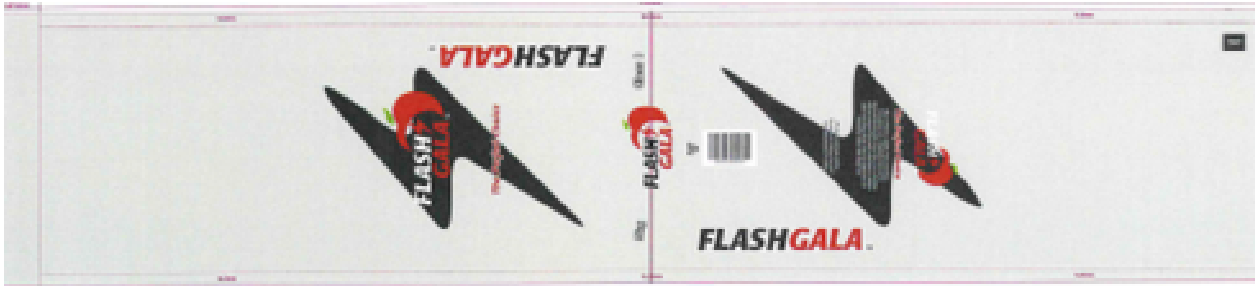
1.5 kg Bag



1.0 kg bag



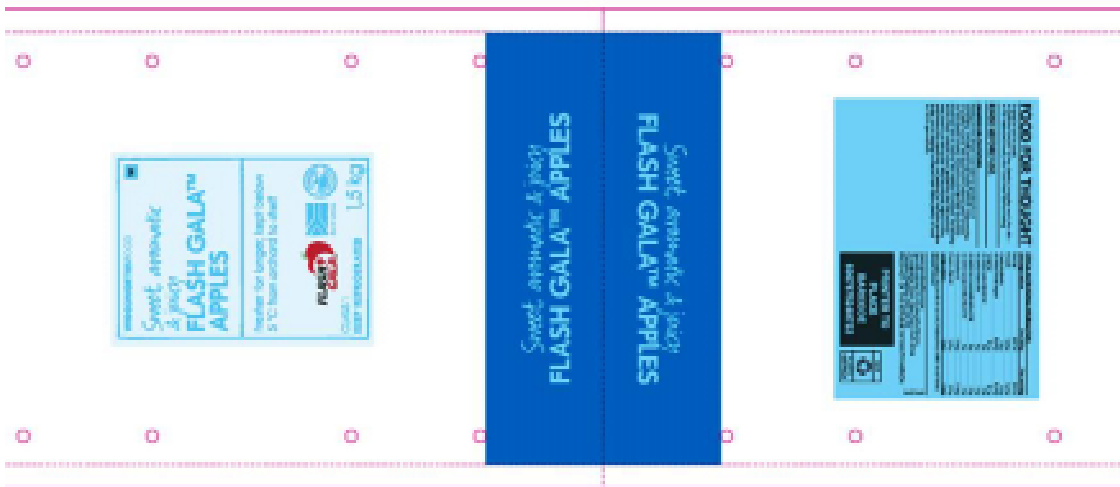
3.0 kg bag



## Retail Bags

### Woolworths

1.5 kg



### Smalls



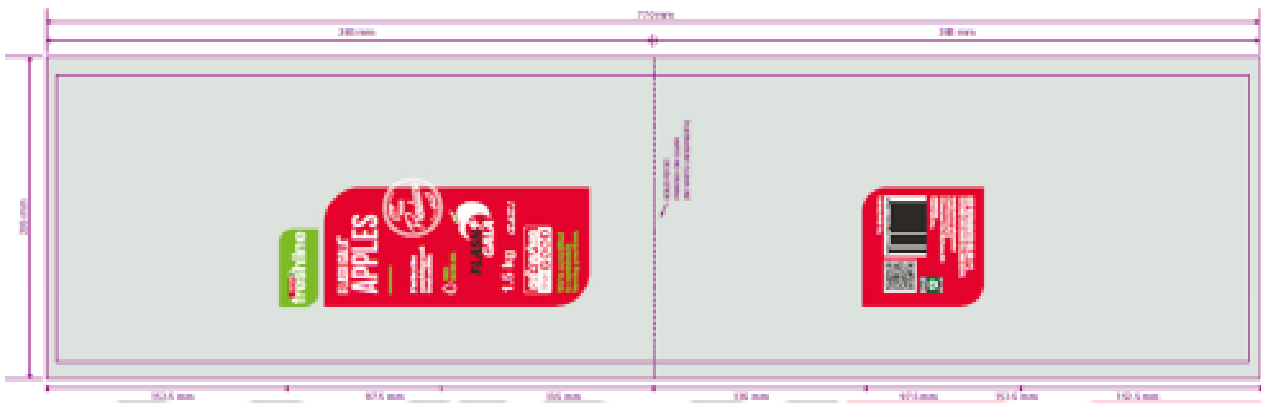
**Pick 'n Pay**

1.5 kg



**SPAR**

1.5 Kg



**Freshmark**

1.5 Kg



**Freshmark Flasher**



## Fruit Label Layout

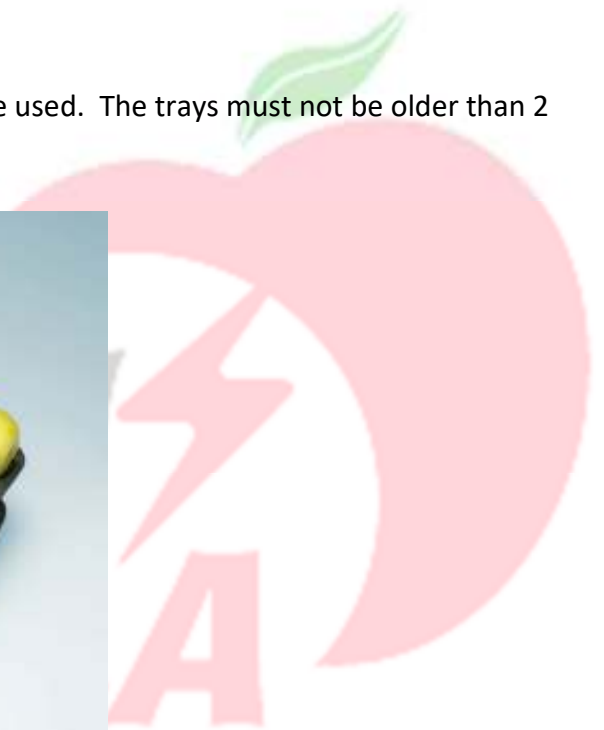
Red colour (Pantone 180C), Green colour (Pantone 361C) on white background.



At least 95% of all fruit must have the correct label. Couts 216, 198 and 180 no labelling.

## Trays

Only 110 GSM black laminated polystyrene trays may be used. The trays must not be older than 2 months.



## Bubble Pad



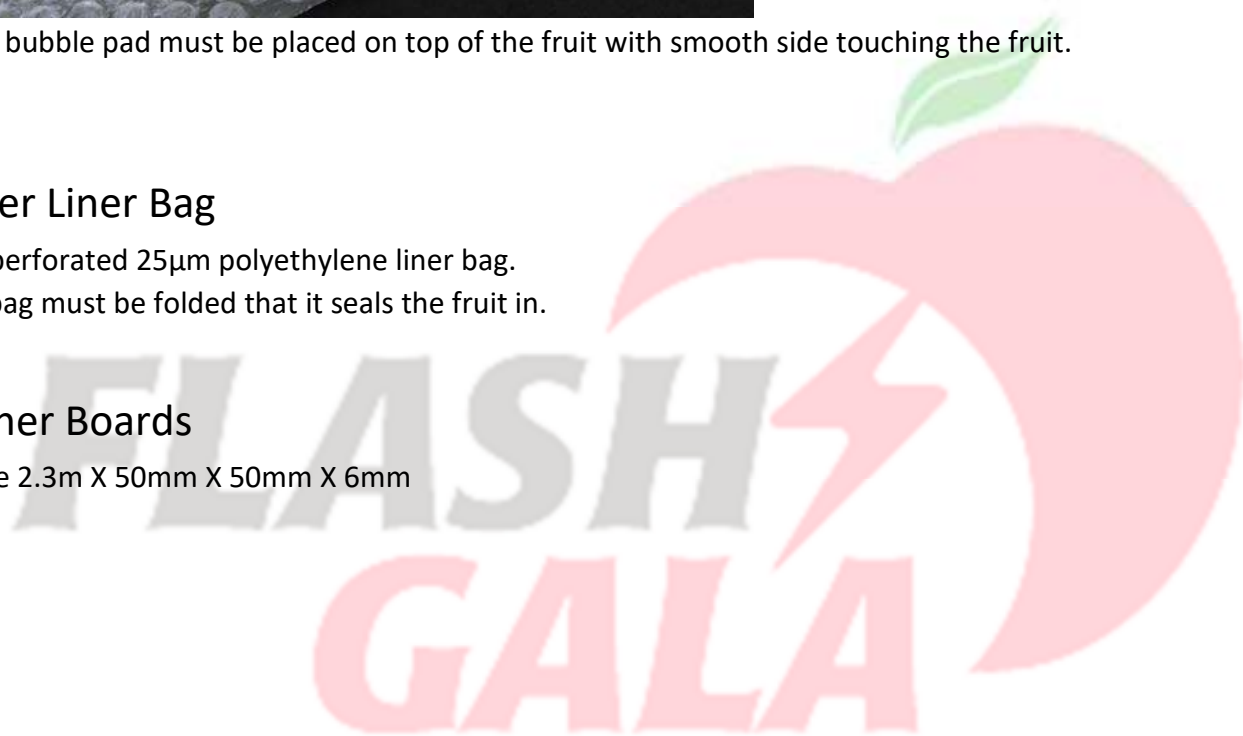
Clear bubble pad must be placed on top of the fruit with smooth side touching the fruit.

## Outer Liner Bag

Red perforated 25µm polyethylene liner bag.  
The bag must be folded that it seals the fruit in.

## Corner Boards

White 2.3m X 50mm X 50mm X 6mm





## Packing Format

### Presentation

All fruit to be packed with full red side up and fruit labels facing.

### Direction

First impression important therefor pack fruit facing same direction





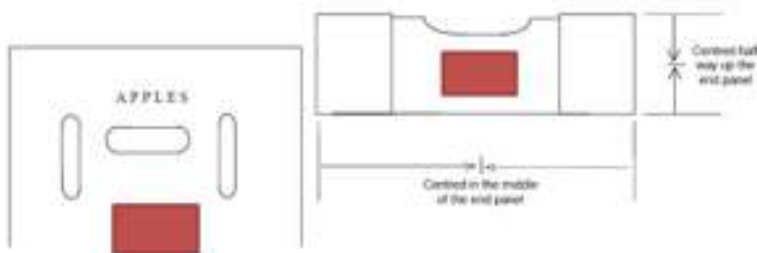
**BELOW IS NOT DESIREBLE FOR (SUPREME) QUALITY**



## Box End Label

Placement of Carton Labels on End Panels

- Carton labels must be placed in the positions detailed in Figure 1 for the various pack types.
- To be placed neat and straight on the end of the carton.



**Figure 1: Placement of Carton Labels on End Panels shown by red square**

All box end labels must indicate:

- Class
- PUC number and packing number
- Use registered codes and specifications
- Cultivar name
- BigBucks Flash Gala™.
- Count (i.e. number of pieces of fruit in the pack) or fruit weight and/or fruit diameter

- Commodity
- Apples/Pears
- Exporter address
- “Produce of South Africa”
- Global GAP number

## GlobalGap Number

The 13 digit GlobalGap Number (GGN) must be printed on each carton end panel.

## Date Code

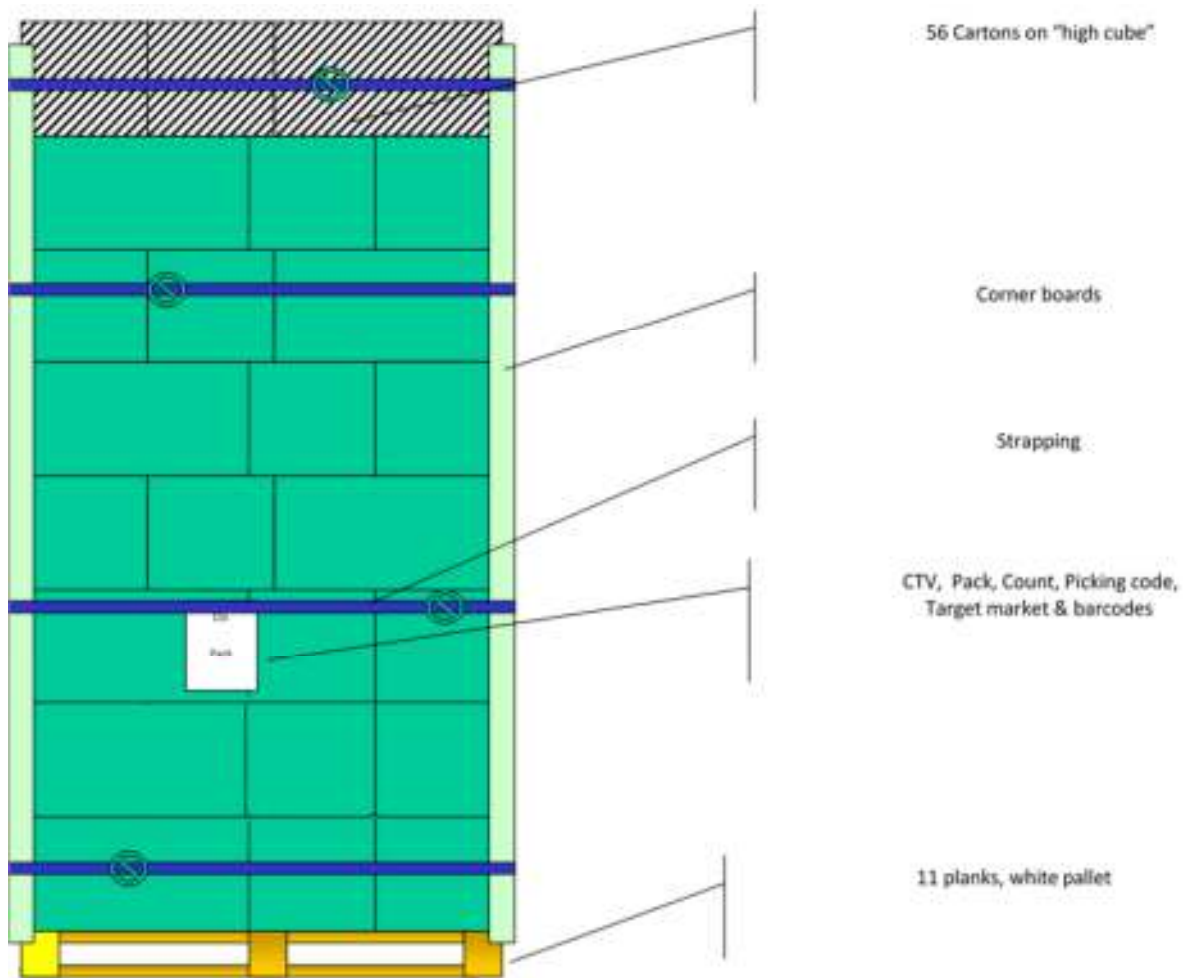
Date code	2	3	2	1
<b>Explanation</b>	Last digit for the week (Place after last digit to make the week date)	Day code: Beginning of the week will be 1 = Monday	Picking code	First digit of the week (place in front of first number of this code)
<b><u>Date code 2321:</u></b> Week = 12 Day Code= Wednesday Picking code = Optimum fruit				

## Picking Code

### **Picking Codes:**

- 2:** Optimum fruit – Apples: about 1/3 to 1/2 of the apple’s surface coloured when starch test conducted.
- 5:** CA-fruit
- 6:** DCA plus SmartFresh
- 7:** DCA
- 8:** RA-SmartFresh
- 9:** CA-SmartFresh
- 0:** Harvista/Retain treated fruit

## Pallet format



**ENSURE** cartons on pallets are neatly stacked, with corner boards correctly used and box end labels are straight.

