

FLASH GALA™

Quality Manual

2020



Contents

FLASH GALA MINIMUM INTERNATIONAL QUALITY SPECIFICATIONS AT DESTINATION	3
FLASH GALA MINIMUM LOCAL QUALITY SPECIFICATIONS AT DESTINATION	4
Colour Chart	5
PHOTOS OF SELECTED CHARACTERISTICS AND DEFECTS	6
1. Colour	6
2. Decay	7
3. Internal Browning	8
4. Apple Scab	8
5. Bruising	9
6. Cracks	10
7. Hail Marks	11
8. Insect Damage	12
9. Sunburn	13
10. Blemishes	14
11. Lenticel Damage	15
12. Malformations	16
13. Stem End Russet	17
14. Retiform Russet	18
Packing Manual	19
Carton Layout	19
Bag Layout	19
Fruit Label Layout	19
Trays	20
Bubble Pad	20
Outer Liner Bag	20
Corner Boards	20
Packing Format	21
Presentation	21
Direction	21
Box End Label	21
GlobalGap Number	22
Date Code	22

Picking Code22

Pallet format23



FLASH GALA™ MINIMUM INTERNATIONAL QUALITY SPECIFICATIONS AT DESTINATION

CHARACTERISTICS	
Approved Variety: Bigbucks	
Brix: Average of 12% or greater	
Colour: Cream-pale green background, covered by greater than 80% surface colour in a continuous block, where surface colour is not interrupted by an area of more than 5 cm ² . Allow tolerance of 10% for fruit with colour interruption greater than 5 cm ² . Allow tolerance of 5% for fruit with less than required total surface colour. See Colour Chart of DAFF A36 no 8 Minimum.	
Firmness (Pressure): Minimum average 6.5 kg/cm ² (14.3 lbs/cm ²) or greater. Minimum average at departure 7.0 kg/ (15.4 lbs/cm ²) or greater. Measured with an 11 mm penetrometer	
DESCRIPTION OF THE DEFECT AND CLASSIFICATION	
MAJOR DEFECTS	<ul style="list-style-type: none"> • May not exceed 1% of sample size as described <ul style="list-style-type: none"> ○ Core Rot ○ Decay includes Grey mould, Blue mould, Bull's Eye rot or any other decay ○ Internal Browning ○ Scald ○ Bitter Pit • May not exceed 3% of sample size as described <ul style="list-style-type: none"> ○ Apple Scab also known as Black Spot, <i>Venturia inaequalis</i> or <i>Fusicladium dendriticum</i>. When more than three spots of 2 mm diameter on a single fruit ○ Lenticel Damage: When more than two spots greater than 1 mm diameter on a single fruit ○ Bruising — major: When flesh is discoloured ○ Cracks — major: Open cracks showing the flesh of the apple ○ Hail Marks — major: When skin is injured or flesh is discoloured ○ Insect Damage — major: Fresh unhealed damage or when skin penetration results in flesh discolouration or with evidence of excrement ○ Skin Penetrations such as stalk or mechanical injuries: Major any skin penetration, healed or otherwise. ○ Sunburn — major: When flesh is discoloured
TOTAL MAJOR + MAJOR 3% MAY NOT EXCEED 3% OF SAMPLE SIZE	
MINOR DEFECTS	<ul style="list-style-type: none"> • Blemishes such as scars, scratches, rub marks and frost injury: When a single mark is more than 20 mm long and a total area greater than 1 cm² on a single fruit • Bruising — minor: When total bruised area per apple is greater than 1 cm² • Chemical Burn: When surface colour is affected • Stem end cracks — minor: Light healed cracks around greater than half of stem end basin • Dirty fruit: Fruit must be clean but dust allowed in lower halves of stem and calyx ends • Hail Marks — minor: any visible hail mark. • Insect Damage— minor: When superficial mark (no skin penetration) with an area greater than 3 mm • Malformations: When malformations more than 10 mm on a single fruit • Net like russet: When rough to touch and surface colour is affected • Russet: When extended outside the stem end and calyx basin • Sunburn — minor: When surface colour is affected
TOTAL MAJOR 1% & 3% + MINOR DEFECTS MAY NOT EXCEED 10% OF SAMPLE SIZE (EG. 3% MAJOR + 7% MINOR)	

FLASH GALA™ MINIMUM LOCAL QUALITY SPECIFICATIONS AT DESTINATION

CHARACTERISTICS	
Approved Varieties: Bigbucks	
Brix: Average of 11% or greater	
Colour: Cream-pale green background, covered by greater than 80% surface colour in a continuous block, where surface colour is not interrupted by an area of more than 5 cm ² . Allow tolerance of 10% for fruit with colour interruption greater than 5 cm ² Allow tolerance of 10% for fruit. With less than required total surface colour. See Colour Chart of DAFF A36 no 8 Minimum.	
Firmness (Pressure): Minimum average 6.3 kg\cm ² (14 lbs/cm ²) or greater at source. Measured with an 11 mm penetrometer	
DESCRIPTION OF THE DEFECT AND CLASSIFICATION	
MAJOR DEFECTS	<ul style="list-style-type: none"> • May not exceed 2% of sample size as described <ul style="list-style-type: none"> ○ Core Rot ○ Decay includes Grey mould, Blue mould Bulls Eye rot or any other decay ○ Internal Browning ○ Scald ○ Bitter Pit • May not exceed 6% of sample size as described <ul style="list-style-type: none"> ○ Apple Scab also known as Black Spot, <i>Venturia inaequalis</i> or <i>Fusicladium dendriticum</i>. When more than three spots of 2 mm diameter on a single fruit ○ Lenticel Damage: When more than two spots greater than 1 mm diameter on a single fruit ○ Bruising — major: When flesh is discoloured ○ Cracks — major: Open cracks showing the flesh of the apple ○ Hail Marks — major: When skin is injured or flesh is discoloured ○ Insect Damage — major: Fresh unhealed damage or when skin penetration results in flesh discolouration or with evidence of excrement ○ Skin Penetrations such as stalk or mechanical injuries: When two marks greater than 3 mm diameter on a single fruit. ○ Sunburn — major: When flesh is discoloured, No secondary burn allowed
TOTAL MINOR MAY NOT EXCEED 12% OF SAMPLE SIZE	
MINOR DEFECTS	<ul style="list-style-type: none"> • Blemishes such as scars, scratches, rub marks and frost injury: When a single mark is more than 15 mm long and a total area greater than 1 cm² on a single fruit • Bruising — minor: When total bruised area per apple is greater than 15mm • Chemical Burn: When surface colour is affected • Stem end cracks — minor: Light healed cracks of 1mm wide to 5mm long (if dry) allowed • Dirty fruit: Fruit must be clean but dust allowed in lower halves of stem and calyx ends • Hail Marks — minor: When more than three light marks less than 3 mm diameter on a single fruit and no more than 1 mm depth. • Insect Damage— minor: When superficial mark (no skin penetration) with an area greater than 3 mm • Malformations: When malformations more than 20 mm on a single fruit • Net like russet: A37 no4 • Russet: A31 no 10 • Sunburn — minor: Yellow allowed – PLD Colour no 4 – No second burn
TOTAL MAJOR 2% & 6% + MINOR DEFECTS MAY NOT EXCEED COMBINED DEFECTS 12% OF SAMPLE SIZE	

Colour Chart



PHOTOS OF SELECTED CHARACTERISTICS AND DEFECTS

1. Colour

Colour: Cream-pale green background, covered by greater than 80% surface colour in a continuous block, where surface colour is not interrupted by an area of more than 5 cm². Prints R7 & R8 should be packed separately.

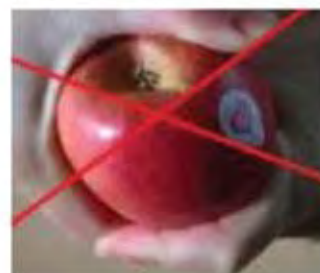
Tolerance for 10% of fruit with colour interruption greater than 5 cm².

Tolerance for 6% of fruit with less than the required total surface colour.

Example of fruit with 80% colour with right intensity. The other side has to be better.



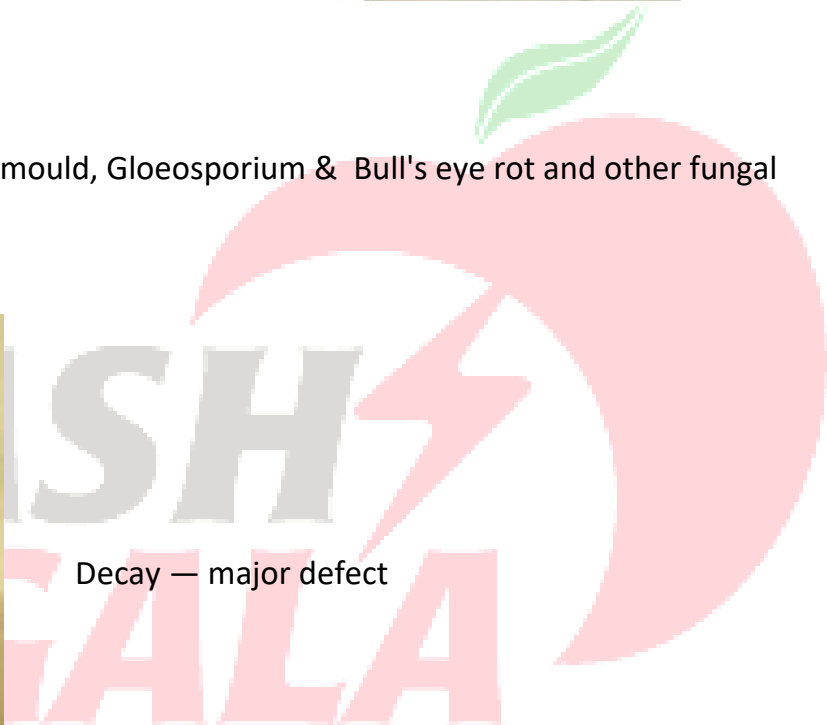
Method for assessing the 80% block by holding the fruit upright, not from the ends or angled.



2. Decay

All decay, including Blue mould, Gray mould, Gloeosporium & Bull's eye rot and other fungal developments.

MAJOR DEFECT



Decay — major defect

3. Internal Browning

MAJOR DEFECT



Internal browning — major defect

4. Apple Scab

Also known as Black Spot, *Venturia inaequalis* or *Fusicladium dendriticum*.

MAJOR DEFECT - More than three spots of 2 mm diameter on a single fruit.



More than three spots — major defect



Three spots or less — within tolerance

5. Bruising

MAJOR DEFECT When flesh is discoloured

MINOR DEFECT When greater than 1 cm²



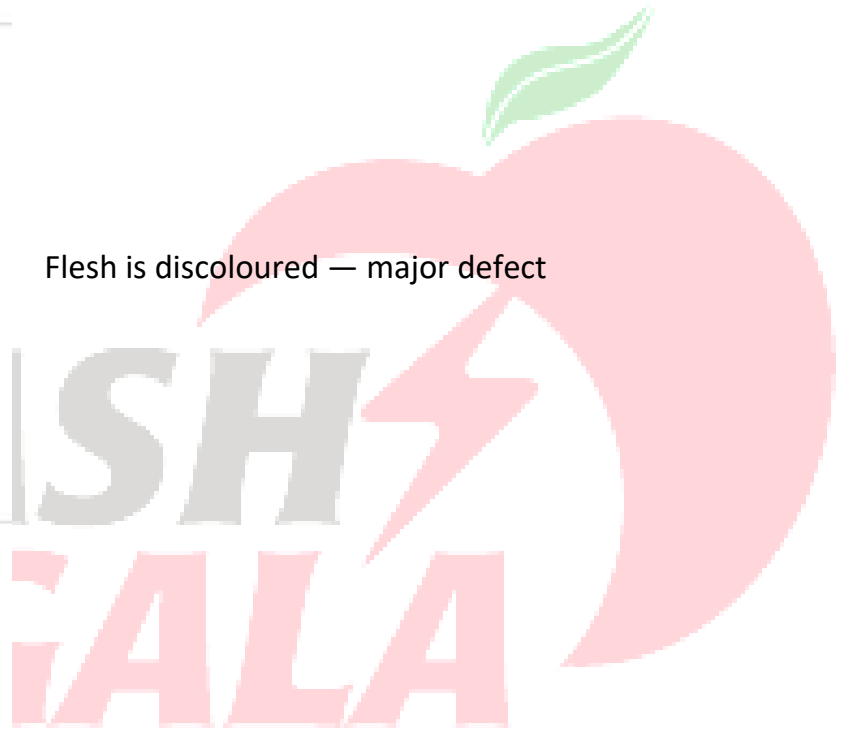
Flesh is discoloured — major defect



Flesh is discoloured — major defect



Greater than 1 cm² — minor defect



6. Cracks

MAJOR DEFECT Open cracks showing the flesh of the apple

MINOR DEFECT Light healed cracks more than half of calyx basin



Open cracks — major defect



Light cracks less than half of calyx basin — within tolerance



7. Hail Marks

MAJOR DEFECT: When skin is injured, or flesh is discoloured.

MINOR DEFECT: Export – any hail mark. Local - When more than three light marks less than 3 mm diameter on a single fruit and no more than 1 mm depth. (E=export, L=local & X=out)

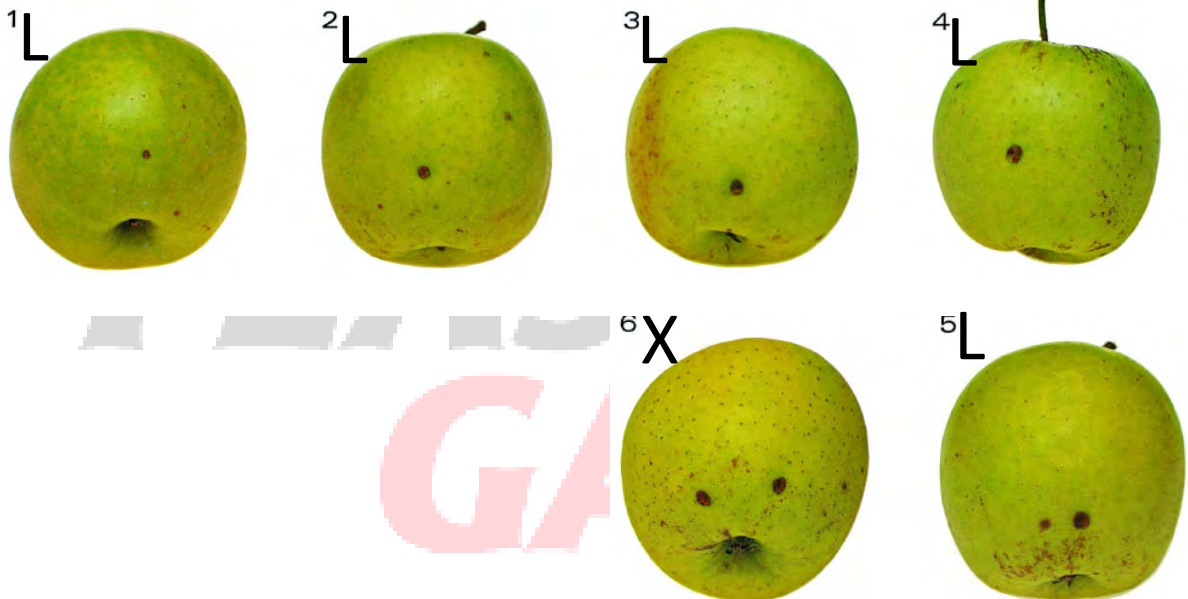
A29

Hail marks — minor defect — only local



A30

Hail marks — major defect



8. Insect Damage

MAJOR DEFECT - When skin penetration by insect pest results in flesh discolouration

MINOR DEFECT - Superficial mark (no skin penetration) with an area greater than 3 mm



Skin penetration and flesh discoloured — major defect



9. Sunburn

MAJOR DEFECT When flesh is discoloured

MINOR DEFECT When blush colour is affected



Flesh is discoloured — major defect



Blush is affected — minor defect

FLASH 
GALA

10. Blemishes

E.g. scars, scratches, rub marks and frost injury

MINOR DEFECT - When a single mark is more than 20 mm long and a total area greater than 1 cm² on a single fruit



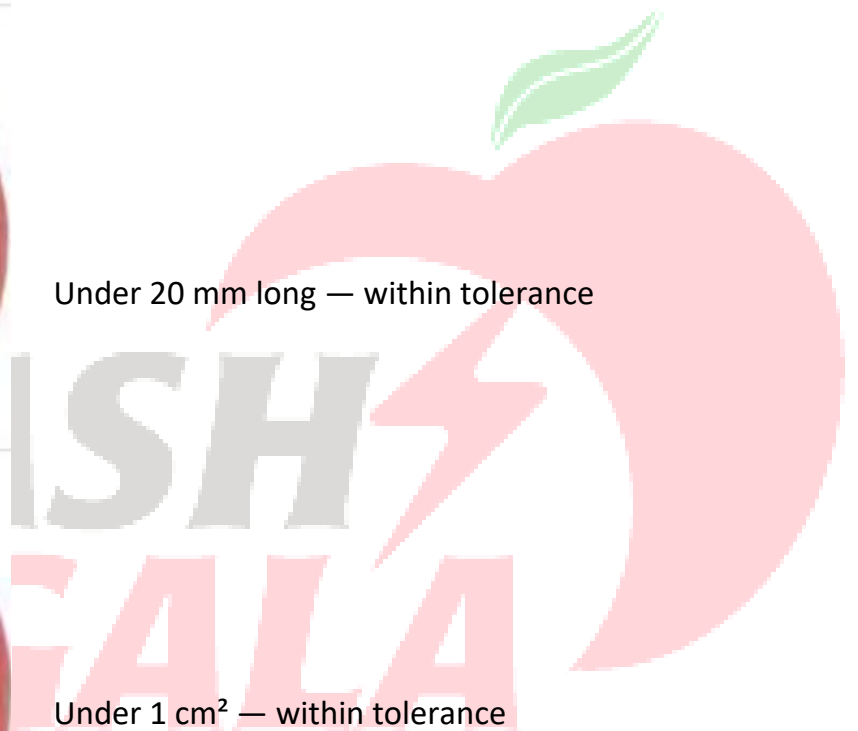
Greater than 20 mm or 1 cm² — minor defect



Under 20 mm long — within tolerance



Under 1 cm² — within tolerance



11. Lenticel Damage

MINOR DEFECT - More than two spots greater than 1 mm diameter on a single fruit.



More than two lenticel damaged spots — minor defect

Two lenticel damaged spots — within tolerance

12. Malformations

MINOR DEFECT - Malformations more than 10 mm on a single fruit



Fruit not symmetrical more than 10 mm
— Minor defect

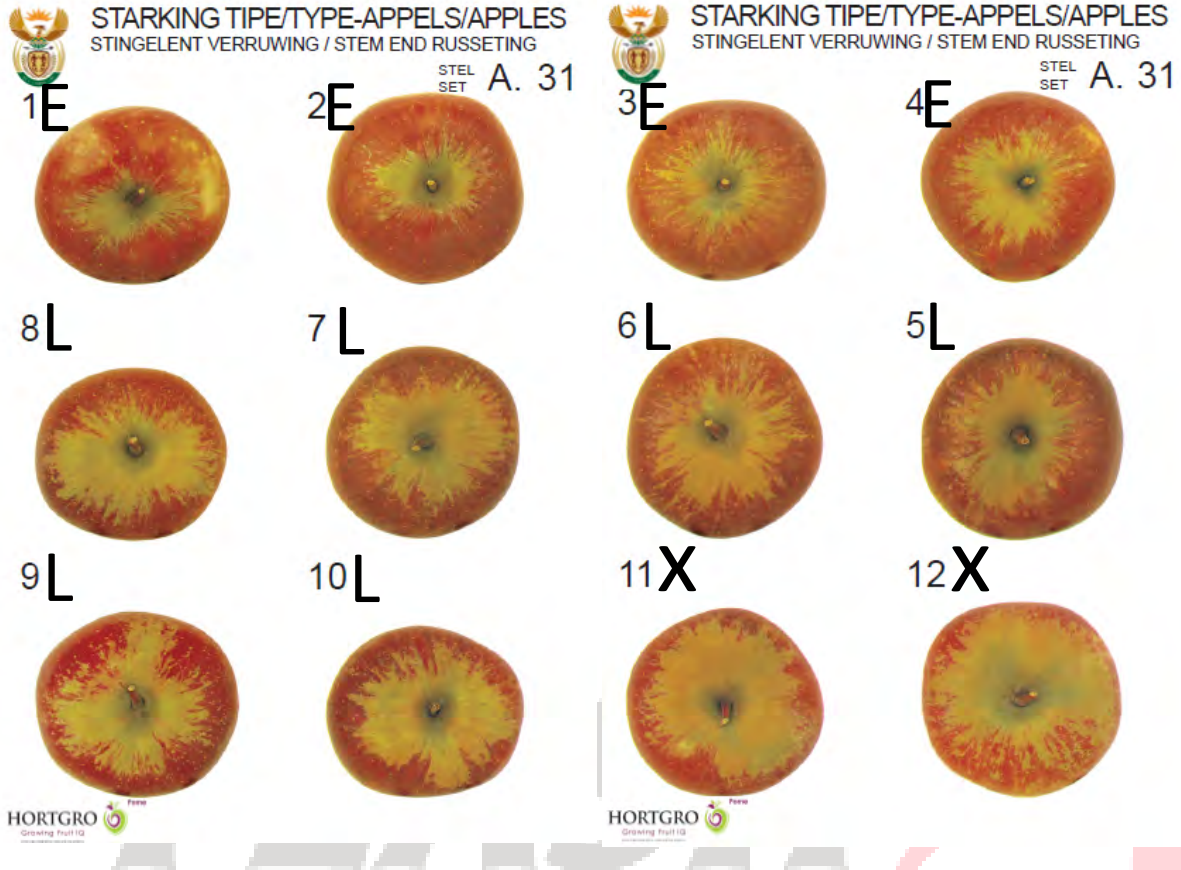


13. Stem End Russet

MINOR DEFECT – Export: When extended beyond the stem end or calyx basin

Russet extends beyond basin — minor defect – Export: more than picture 4 – A31, Local more than picture 10 – A31.

E= export, L=local, X=out

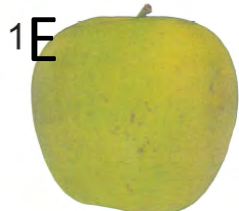


GALÁ

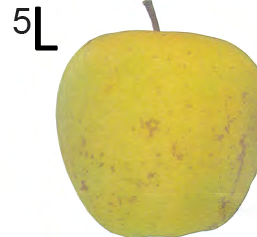
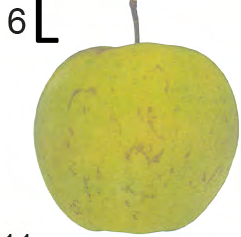
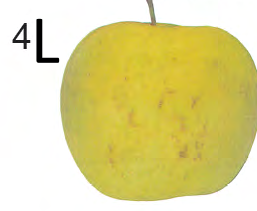
14. Retiform Russet

Max A37 No 2 Export, No6 local

 GOLDEN DELICIOUS-APPELS/APPLES
NETAGTIGE VERRUWING / RETIFORM RUSSETING
STEL SET A. 37



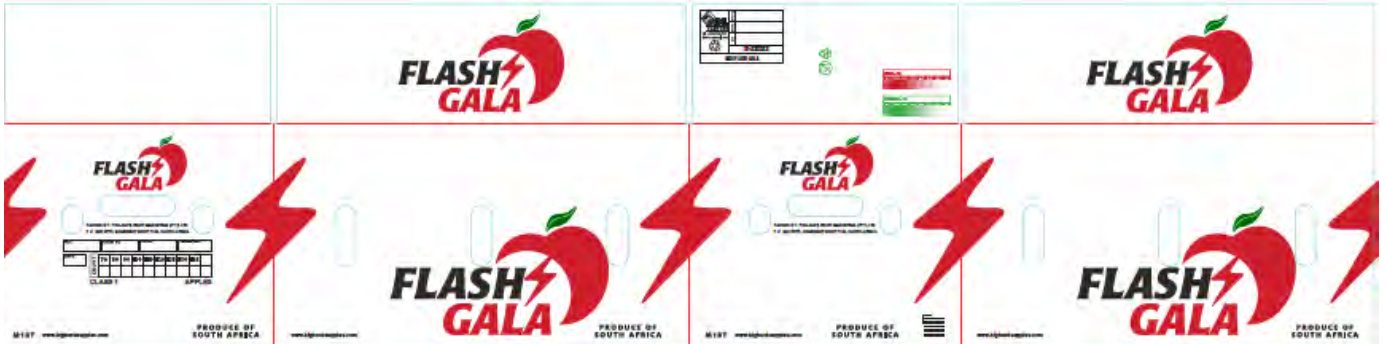
 GOLDEN DELICIOUS-APPELS/APPLES
NETAGTIGE VERRUWING / RETIFORM RUSSETING
STEL SET A. 37



Packing Manual

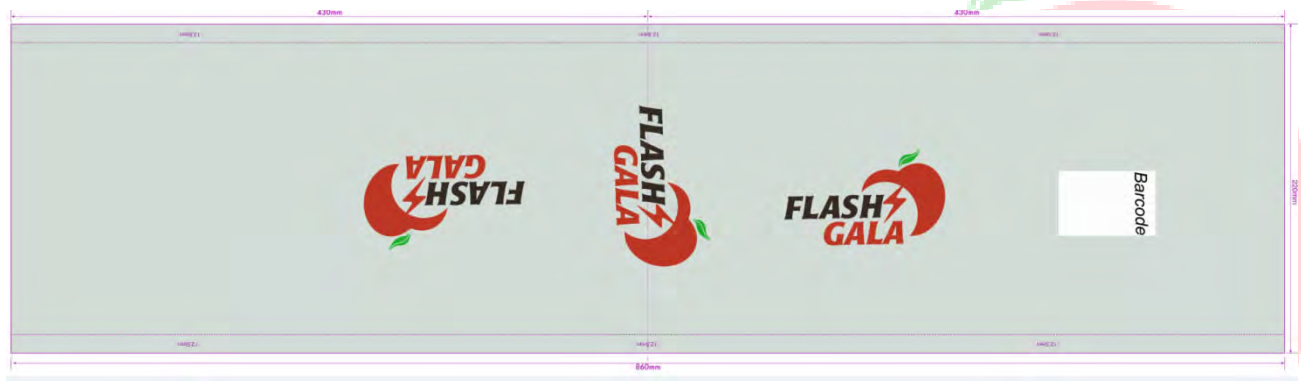
Carton Layout

Bushel



All fruit complying to the quality standards must be packed in Branded packing material.

Bag Layout



Fruit Label Layout

Red colour (Pantone 180C), Green colour (Pantone 361C) on white background.



At least 95% of all fruit must have the correct label.

Trays

Only 110 GSM black polystyrene trays may be used. The trays must not be older than 2 months.



Bubble Pad



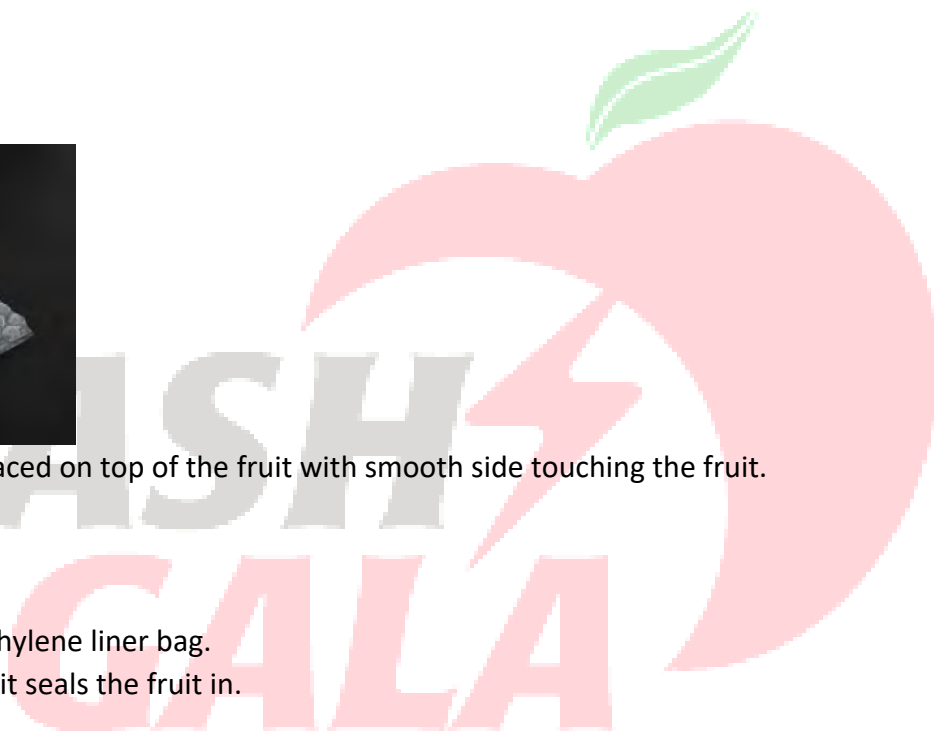
Clear bubble pad must be placed on top of the fruit with smooth side touching the fruit.

Outer Liner Bag

Red perforated 25µm polyethylene liner bag.
The bag must be folded that it seals the fruit in.

Corner Boards

White 2.3m X 50mm X 50mm X 6mm



Packing Format

Presentation

All fruit to be packed with full red side up and fruit labels facing.

Direction

First impression important therefor pack fruit facing same direction



Box End Label

Placement of Carton Labels on End Panels

- Carton labels must be placed in the positions detailed in Figure 1 for the various pack types.

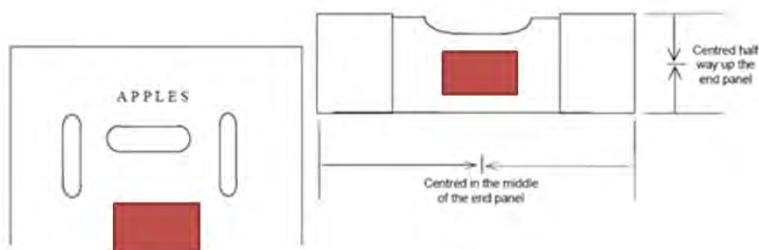


Figure 1: Placement of Carton Labels on End Panels shown by red square

All box end labels must indicate:

- Grade
- PUC number and packing number
- Use registered codes and specifications
- Cultivar name
- Bigbucks – Flash Gala.
- Count and fruit weight and/or fruit diameter

- The count (i.e. number of pieces of fruit in the pack) must be printed on each carton.
- Commodity
- Apples/Pears

GlobalGap Number

The 13 digit GlobalGap Number (GGN) must be printed on each carton end panel.

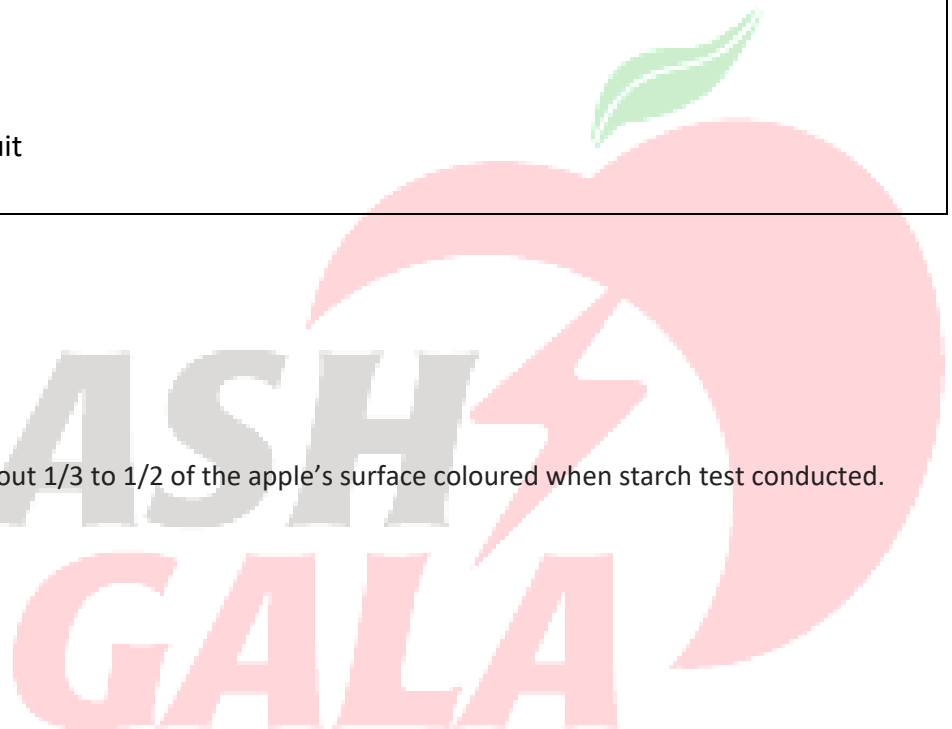
Date Code

Date code	2	3	2	1
Explanation	Last digit for the week (Place after last digit to make the week date)	Day code: Beginning of the week will be 1 = Monday	Picking code	First digit of the week (place in front of first number of this code)
<p><u>Date code 2321:</u> Week = 12 Day Code= Wednesday Picking code = Optimum fruit</p>				

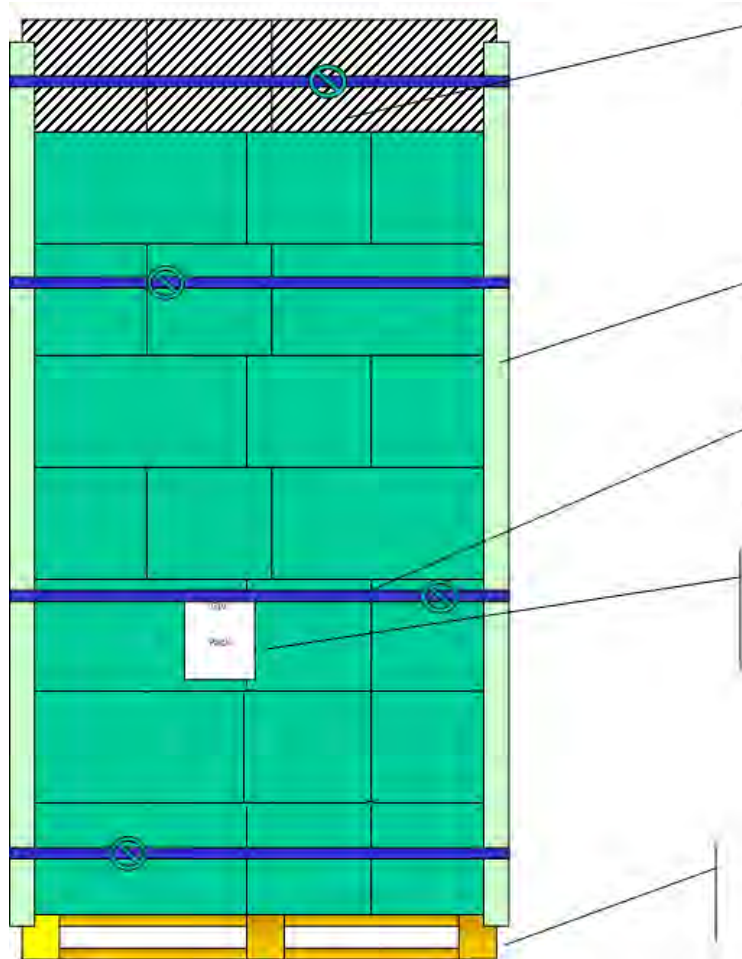
Picking Code

Picking Codes:

- 2:** Optimum fruit – Apples: about 1/3 to 1/2 of the apple's surface coloured when starch test conducted.
- 5:** CA-fruit
- 6:** DCA plus SmartFresh
- 7:** DCA
- 8:** RA-SmartFresh
- 9:** CA-SmartFresh
- 0:** Harvista treated fruit



Pallet format



56 Cartons on "high cube"

Corner boards

Strapping

CTV, Pack, Count, Picking code,
Target market & barcodes

11 planks, white pallet

FLASH
GALA